

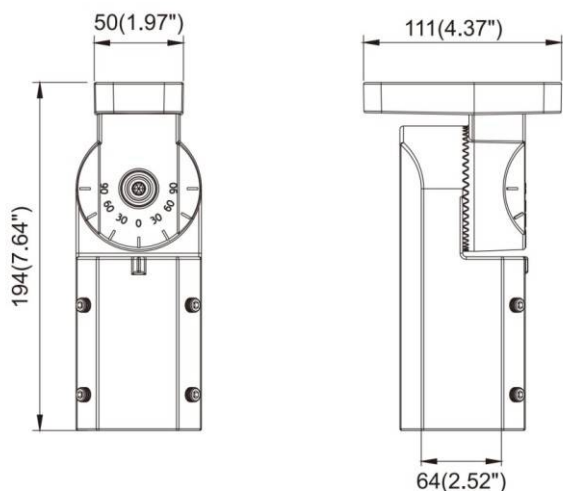
**OUTDOOR / SOLAR STREET LIGHTS /
STELLA HYBRID / STELLA HYBRID
ACCESORIES**

Item code 86.SO21.0001.03

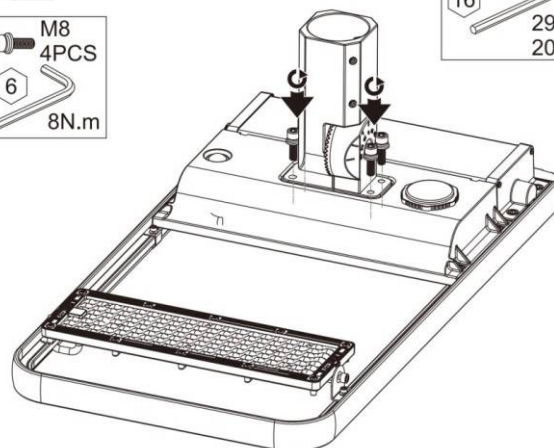
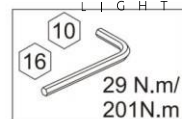
LAVOV
LIGHTING



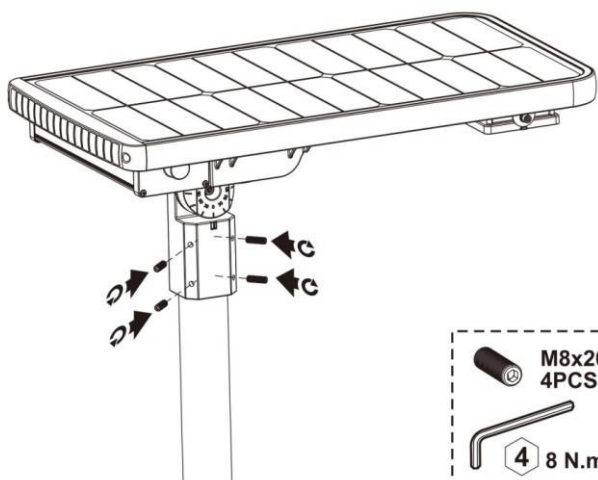
- Installation and wiring of luminaire must be in accordance with all applicable local codes.
- Installation, inspection, and maintenance of luminaires should be performed by a qualified electrician.
- DO NOT make or alter any open holes in the luminaire. Do not modify the luminaire.
- DO NOT install damaged product.
- Make sure electrical power is OFF before and during installation and maintenance.
- Make sure the equipment is properly grounded.
- Make sure the supply voltage is same as the rated fixture voltage.



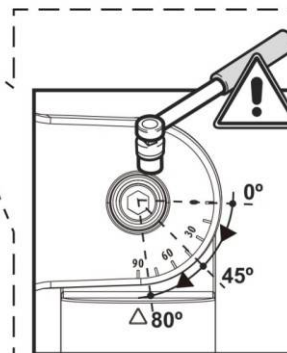
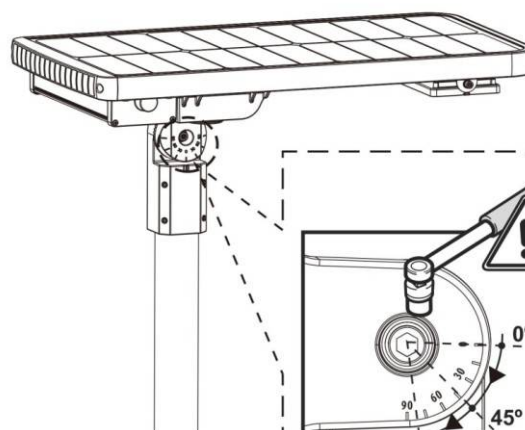
1. ✂



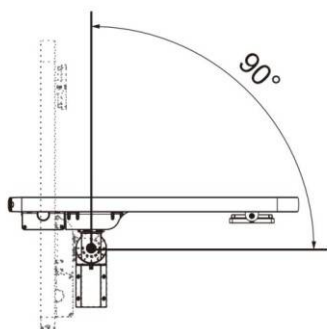
2. ✂



3. ✂



30W-60W



80W-100W

