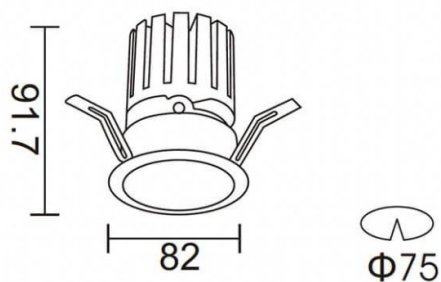
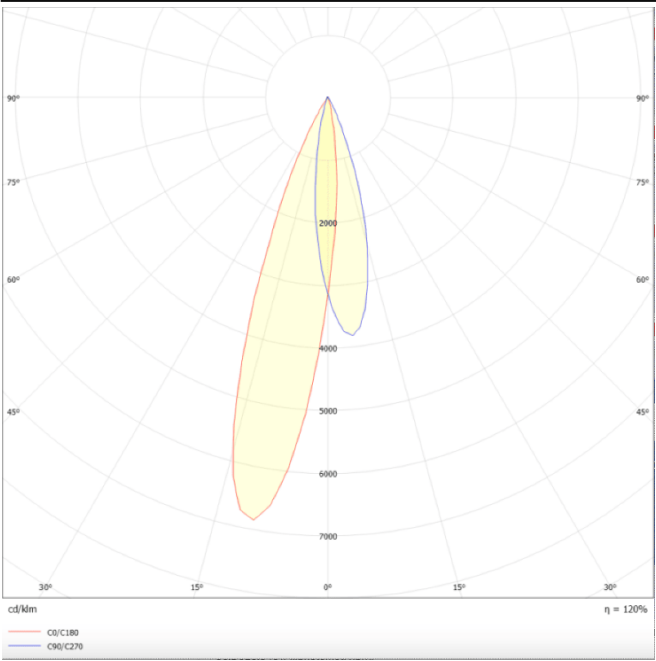




Scheme



Photometry



PRO-DR

Lavov downlight from the family PRO-DR with a power of 12,2W and an optics 12 degrees . CCT 4000K. With a total lumen output of 787,5lm and a luminous efficiency of 64,56lm/W.DALI driver. Made in die cast aluminum and finished in White color.

Item code	86.D025.1413.01
Product type	Indoor
Category	Downlights
Family	PRO-D
Subfamily	PRO-DR
Pictograms	<div><div></div><div>220 240 V</div><div></div><div>CRI 90</div><div>CE</div><div>Driver INCL</div><div>On Off</div><div>DALI</div><div>IP 20</div><div>50000h L80B10</div></div>

Product	
Real power (W)	12.2
Real luminous flux (Lm)	787.5
Luminous efficiency (Lm/W)	64.56
Beam angle (°)	12
Life time (h)	50000 h L80B10
IP	20
Electrical class insulation	Clas II
Colour	White
Control gear included	Yes
Control gear	DALI
Flicker Free	Yes
Light source	LED
Type of LED	COB
Colour temperature (K)	4000
Colour consistency (SDCM)	SDCM<3
CRI	90