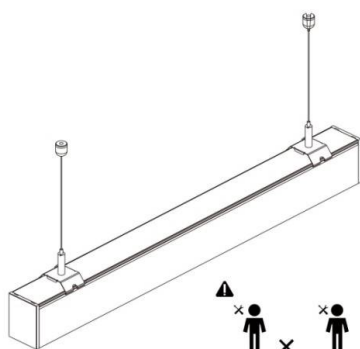




- Installation and wiring of luminaire must be in accordance with all applicable local codes.
- Installation, inspection, and maintenance of luminaires should be performed by a qualified electrician.
- DO NOT make or alter any open holes in the luminaire. Do not modify the luminaire.
- DO NOT install damaged product.
- Make sure electrical power is OFF before and during installation and maintenance.
- Make sure the equipment is properly grounded.
- Make sure the supply voltage is same as the rated fixture voltage.



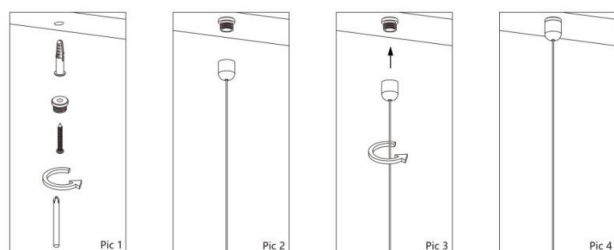
No.	Accessories	Picture	No.	Accessories	Picture
1	Plastic expansion pipe		6	Lock nut	
2	Screw		7	Lock bolt	
3	Cylindrical bolt		8	Metal buckle	
4	Cylindrical nut		9	Connector 2	
5	Seizing wire		10	M6 Screw	

The light source contained in this luminaire shall only be replaced by the manufacturer or his service agent or a similar qualified person

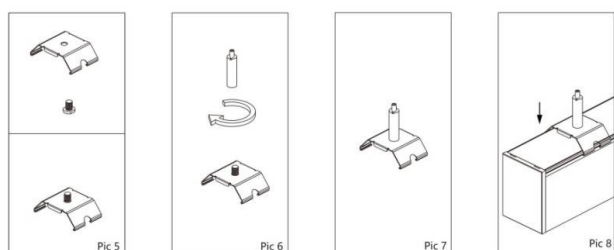
If the external flexible cable of this luminaire is damaged, it shall be exclusively replaced by the manufacturer or his service agent or a similar qualified person in order to avoid a hazard.

Terminal block not included. Installation may require advice from a qualified person.

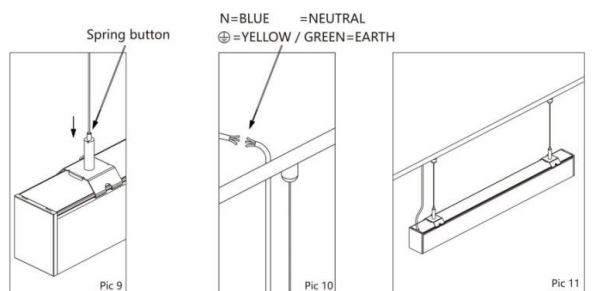
## Installation steps



1. Drill plastic expansion pipe into ceiling, put the phillips screw through cylindrical bolt, then into expansion pipe, as diagrammatic deiction
2. Put seizing wire (with small ends) through cylindrical nut
3. Screw the cylindrical nut to the cylindrical bolt
4. Installed seizing wire

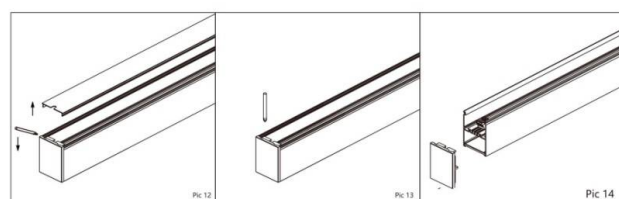


5. Put lock bolt through metal buckle, diagrammatic direction
6. Screw lock nut to the lock bolt
7. Installed metal buckle
8. Buckle into the slot of lamp

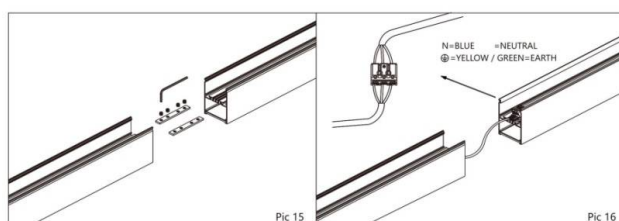


9. Connect the wire and buckle by pressing the spring button on the top of the lock nut, adjust wire length
10. Connect power cord
11. Suspended linear light

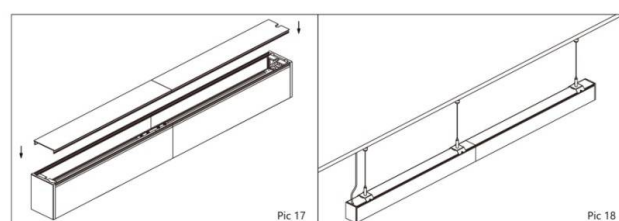
## Connect steps



12. Open the cover with a slotted
13. Unscrew the screws on end cap with a Phillips screwdriver
14. Open the end cap



15. Connect lamps by connector, make sure both linear lights linked seamless, tighten the screws
16. Connect power cord



17. Put cover on
18. Seamless connected suspended linear light