



COB STRIPS IP20

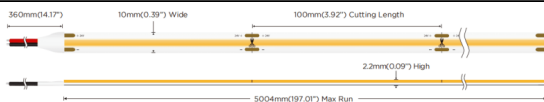
Lavov LED strip from the family COB STRIPS IP20 with a power of 12W/m and a beam angle of 120°. Dimensions PCB 10mm x 5m trimmable 100mm, 400 LED/m With a total lumen output of 1116lm/m and a luminous efficacy of 93lm/W. CCT 2700. CRI>90.

| | |
|--------------|---|
| Item code | 86.LS30.2200.90 |
| Product type | Indoor |
| Category | LED Strips |
| Family | COB strips |
| Subfamily | COB STRIPS IP20 |
| Pictograms | <div style="display: flex; gap: 5px;"> <div style="border: 1px solid gray; border-radius: 5px; padding: 2px;">CRI 90</div> <div style="border: 1px solid gray; border-radius: 5px; padding: 2px;">Driver EXCL.</div> <div style="border: 1px solid gray; border-radius: 5px; padding: 2px;">IP 20</div> <div style="border: 1px solid gray; border-radius: 5px; padding: 2px;">50000h L70B10</div> </div> |

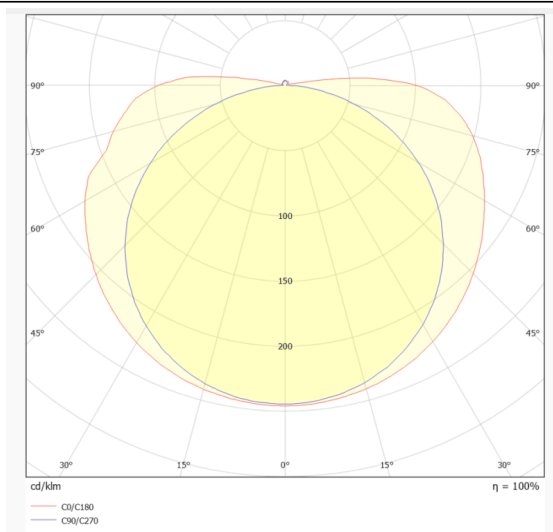
Dimensions

Product dimensions (mm) PCB 10mm x 5m trimmable 100mm, 400 LED/m

Scheme



Photometry



| | |
|----------------------------|---------------|
| Product | |
| Real power (W) | 12 |
| Real luminous flux (Lm) | 1116 |
| Luminous efficiency (Lm/W) | 93 |
| Beam angle (º) | 120 |
| Life time (h) | 50000h L70B10 |
| IP | 20 |
| Control gear included | not |
| Type of LED | 2835 SMD |
| Colour temperature (K) | 2700 |
| Colour consistency (SDCM) | SDCM<3 |
| CRI | 90 |