



### COB STRIPS IP20

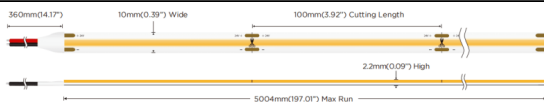
Lavov LED strip from the family COB STRIPS IP20 with a power of 12W/m and a beam angle of 120°. Dimensions PCB 10mm x 5m trimmable 100mm, 400 LED/m With a total lumen output of 1260lm/m and a luminous efficacy of 105lm/W. CCT 6000. CRI > 90.

<b>Item code</b>	<b>86.LS30.2600.90</b>
<b>Product type</b>	<b>Indoor</b>
<b>Category</b>	<b>LED Strips</b>
<b>Family</b>	<b>COB strips</b>
<b>Subfamily</b>	<b>COB STRIPS IP20</b>
<b>Pictograms</b>	<div style="display: flex; gap: 5px;"> <div style="border: 1px solid gray; padding: 2px;">CRI 90</div> <div style="border: 1px solid gray; padding: 2px;">Driver EXCL.</div> <div style="border: 1px solid gray; padding: 2px;">IP 20</div> <div style="border: 1px solid gray; padding: 2px;">50000h L70B10</div> </div>

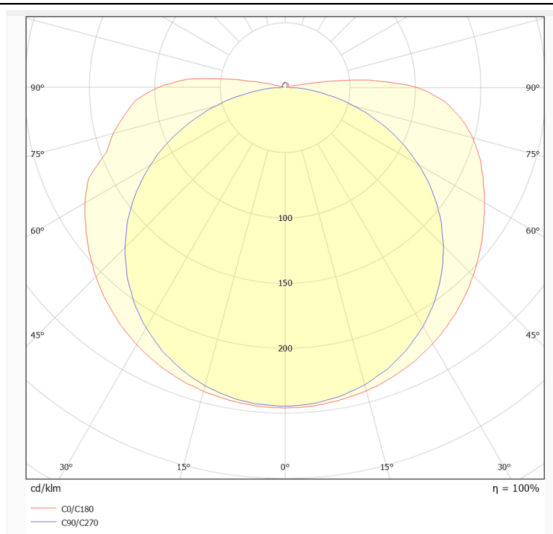
### Dimensions

**Product dimensions (mm)** PCB 10mm x 5m trimmable 100mm, 400 LED/m

### Scheme



### Photometry



### Product

<b>Real power (W)</b>	<b>12</b>
<b>Real luminous flux (Lm)</b>	<b>1260</b>
<b>Luminous efficiency (Lm/W)</b>	<b>105</b>
<b>Beam angle (°)</b>	<b>120</b>
<b>Life time (h)</b>	<b>50000h L70B10</b>
<b>IP</b>	<b>20</b>
<b>Control gear included</b>	<b>not</b>
<b>Type of LED</b>	<b>2835 SMD</b>
<b>Colour temperature (K)</b>	<b>6000</b>
<b>Colour consistency (SDCM)</b>	<b>SDCM3</b>
<b>CRI</b>	<b>90</b>