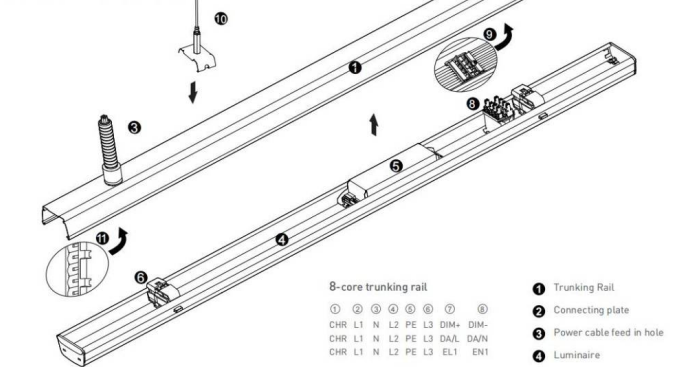




- Installation and wiring of luminaire must be in accordance with all applicable local codes.
- Installation, inspection, and maintenance of luminaires should be performed by a qualified electrician.
- DO NOT make or alter any open holes in the luminaire. Do not modify the luminaire.
- DO NOT install damaged product.
- Make sure electrical power is OFF before and during installation and maintenance.
- Make sure the equipment is properly grounded.
- Make sure the supply voltage is same as the rated fixture voltage.

Tracking and luminaire:

First trunking rail should have one side connecting plate/last trunking rail with no connecting plate on both sides, then fix the luminaire to trunking rail then lock holder, then keep end caps at both sides.

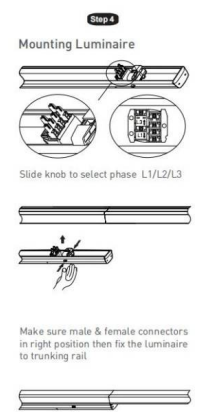
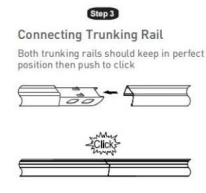
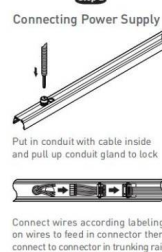
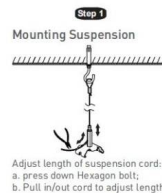


Definition of 5-core 8-core and 12-core trunking rail

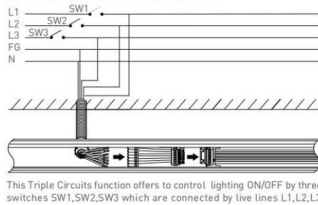
5-core trunking rail ① ② ③ ④ ⑤
L1 N L2 PE L3

12-core trunking rail

① ② ③ ④ ⑤ ⑥ ⑦ ⑧ ⑨ ⑩ ⑪ ⑫ ⑬ ⑭ ⑮ ⑯ ⑰ ⑱ ⑲ ⑳
CHR L1 N L2 PE L3 DIM+ DIM- EL1 EN1 EN2 EL2
CHR L1 N L2 PE L3 DIM+ DIM- EL1 EN1 EN2 EL2
CHR L1 N1 L2 PE L3 DIM+ DIM- L4 N2 L5 L6
CHR L1 N1 L2 PE L3 DIM+ DIM- L4 N2 L5 L6

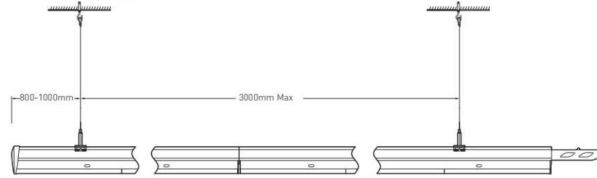


Wire diagram of triple circuits function



Pendant and mounting installation

Starting installation distances point should be 800 mm to 1000 mm, then in between 1st & 2nd point should be 3000 mm max



Four options for installation



Safety notes:
Installation should be performed only by
qualified electrician .

- Make sure no voltage while installation .
- Connect cable wires according to wire labeling.
- Max current should not exceed 16A in one power feed in circuit.



LED linear lighting System composition

Terminal module:

Terminal module can be independently installed as
a single unit, it also can be connected at end of one
linear light row.



- 1 Trunking Rail
- 2 Power cable feed in hole
- 3 Luminaire
- 4 Driver
- 5 Lock holder
- 6 End cap
- 7 Male connector
- 8 Female connector
- 9 Installation cord
- 10

