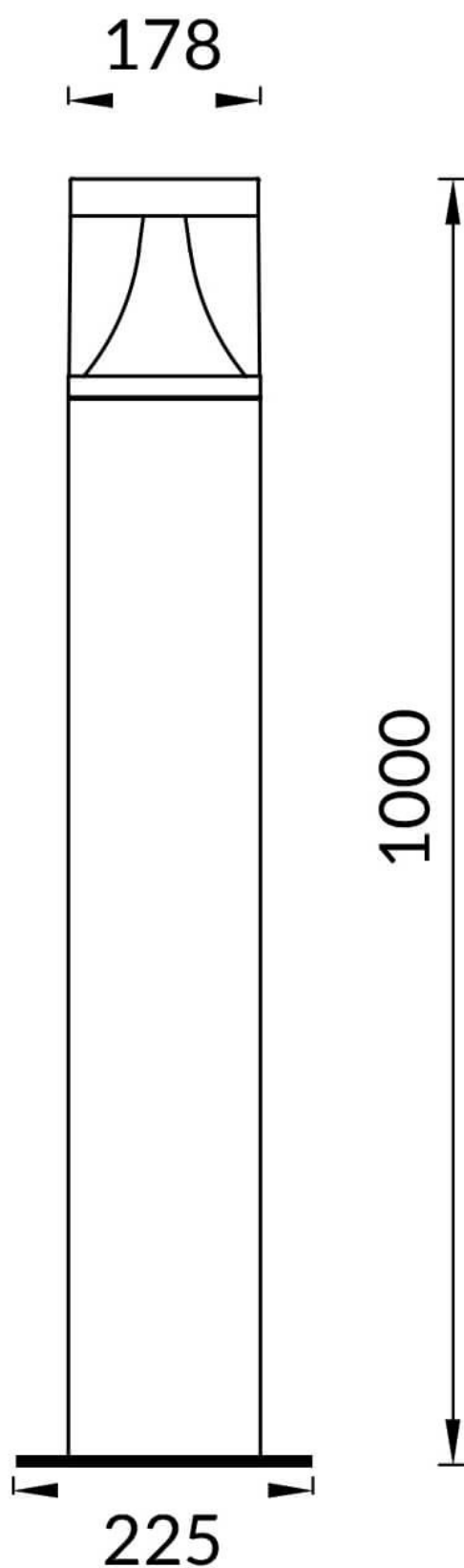




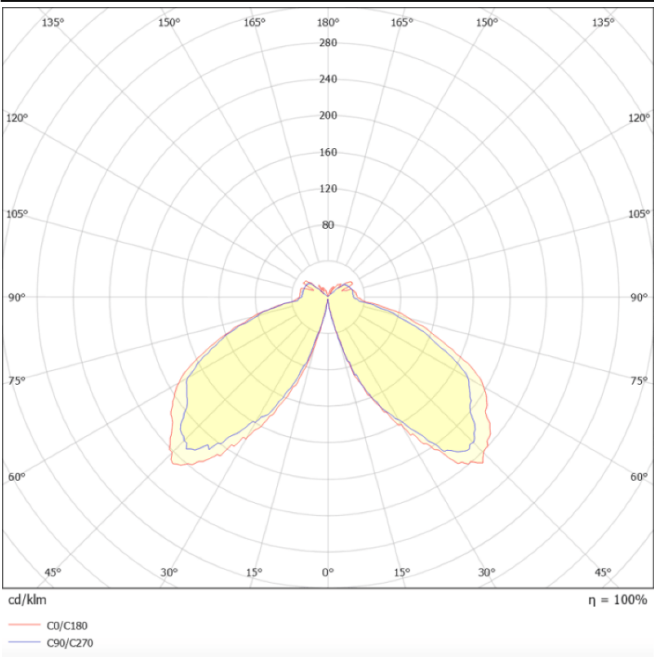
---

---

**Scheme**



Photometry



PHILAR

Outdoor Bollards from the family PHILAR with a power of 25W and an Assymetric lighting distribution. Dimmensions 120X120mm and 1000mm height. Real lumen output of 1850lm and an efficiency of 74lm/W . With a CCT of 3000K. IP65 and IK08 degree of protection. Made in Die Cast Aluminium Body, Extruded Aluminum Pole and finished in Grey color.ON-OFF driver.

Item code	86.OB01.3311.03
Product type	Outdoor
Category	Bollards
Family	PHILAR
Pictograms	<div><div></div><div>50 60 Hz</div><div>220 240 V</div><div></div><div>850°</div><div>CRI 80</div></div> <div><div>SDCM 3</div><div>CE</div><div>Driver INCL.</div><div></div><div>50000h L70B10</div></div> <div><div>IP 65</div><div>IK 08</div></div>

Product	
Real power (W)	25
Real luminous flux (Lm)	1850
Luminous efficiency (Lm/W)	74
Beam angle (°)	Assymetric
Life time (h)	50000h L70B10
IP	65
Electrical class insulation	Class I
Colour	Grey
Chip Brand	SUNPU
Control gear included	yes
Control gear	ON-OFF
Light source	LED
Type of LED	Philips
Colour temperature (K)	3000
Colour consistency (SDCM)	SDCM<3
CRI	75
IK	IK08