

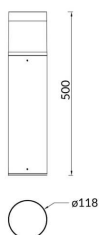


**CONE COVER**

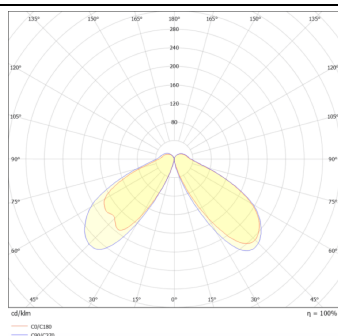
Outdoor Bollards from the family CONE COVER with a power of 12W and an Assymetric lighting distribution. Dimmensions pole diam. 118mm and 500mm height. Real lumen output of 800lm and an efficiency of 66.67lm/W . With a CCT of 3000K. IP65 and IK08 degree of protection. Made in Die Cast Aluminium Body, Extruded Aluminum Pole and finished in Black color.ON-OFF driver.

<b>Item code</b>	<b>86.OB07.1311.02</b>
<b>Product type</b>	<b>Outdoor</b>
<b>Category</b>	<b>Bollards</b>
<b>Family</b>	<b>CONE COVER</b>
<b>Pictograms</b>	

**Scheme**



**Photometry**



<b>Product</b>	
<b>Real power (W)</b>	<b>12</b>
<b>Real luminous flux (Lm)</b>	<b>800</b>
<b>Luminous efficiency (Lm/W)</b>	<b>66.7</b>
<b>Beam angle (°)</b>	<b>Assymetric</b>
<b>Life time (h)</b>	<b>50000h L70B10</b>
<b>IP</b>	<b>65</b>
<b>Electrical class insulation</b>	<b>Class I</b>
<b>Colour</b>	<b>Black</b>
<b>Chip Brand</b>	<b>SUNPU</b>
<b>Control gear included</b>	<b>yes</b>
<b>Control gear</b>	<b>ON-OFF</b>
<b>Light source</b>	<b>LED</b>
<b>Colour temperature (K)</b>	<b>3000</b>
<b>Colour consistency (SDCM)</b>	<b>SDCM&lt;3</b>
<b>CRI</b>	<b>75</b>
<b>IK</b>	<b>IK08</b>