



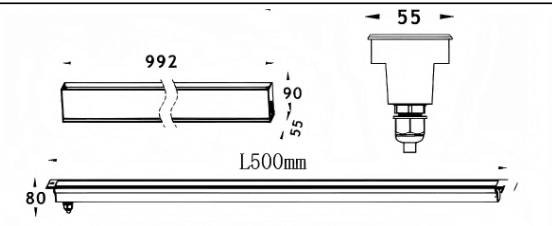
**LINEAR**

Lavov recessed in-ground floor from the family LINEAR, with a power of 24W and a 30 degrees beam angle. Finished in Stainless steel colour. Dimensions 55x80x500mm. With a total lumen output of 1390lm and a luminous efficiency of 58lm/W. CCT 3000K. Driver ON-OFF. Made in Die Cast Aluminium Body, Front Ring stainless Steel, Tempered Glass Cover. IP67. IK07

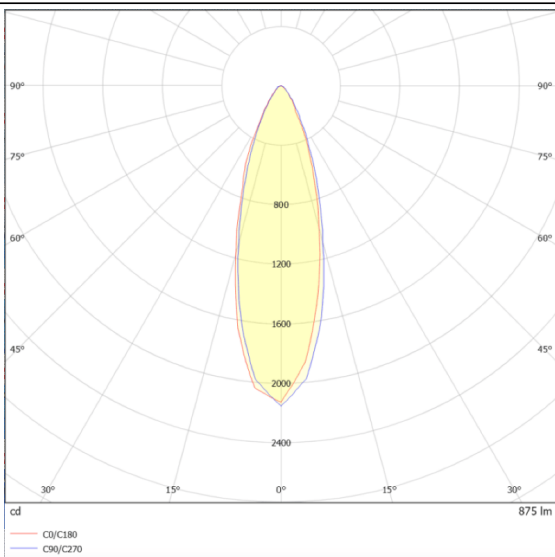
**Dimensions**

**Product dimensions (mm)** **55x80x500mm**

**Scheme**



**Photometry**



<b>Item code</b>	<b>86.OIN8.1321.03</b>
<b>Product type</b>	<b>Outdoor</b>
<b>Category</b>	<b>Recessed Inground Floor</b>
<b>Family</b>	<b>LINEAR</b>
<b>Pictograms</b>	

<b>Product</b>	
<b>Real power (W)</b>	<b>24</b>
<b>Real luminous flux (Lm)</b>	<b>1390</b>
<b>Luminous efficiency (Lm/W)</b>	<b>58</b>
<b>Beam angle (&amp;ordm;)</b>	<b>20</b>
<b>Life time (h)</b>	<b>50000h L80B10</b>
<b>IP</b>	<b>67</b>
<b>Electrical class insulation</b>	<b>Class I</b>
<b>Colour</b>	<b>Stainless steel</b>
<b>Control gear included</b>	<b>Yes</b>
<b>Control gear</b>	<b>ON-OFF</b>
<b>Light source</b>	<b>12x2,0W Osram</b>
<b>Colour temperature (K)</b>	<b>3000</b>
<b>Colour consistency (SDCM)</b>	<b>SDCM&lt;3</b>
<b>CRI</b>	<b>80</b>
<b>IK</b>	<b>IK07</b>