



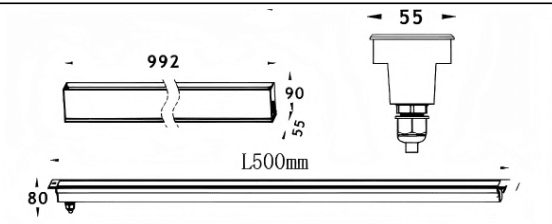
LINEAR

Lavov recessed in-ground floor from the family LINEAR, with a power of 24W and a 45 degrees beam angle. Finished in Stainless steel colour. Dimensions 55x80x500mm. With a total lumen output of 1390lm and a luminous efficiency of 58lm/W. CCT 3000K. Driver ON-OFF. Made in Die Cast Aluminium Body, Front Ring stainless Steel, Tempered Glass Cover. IP67. IK07

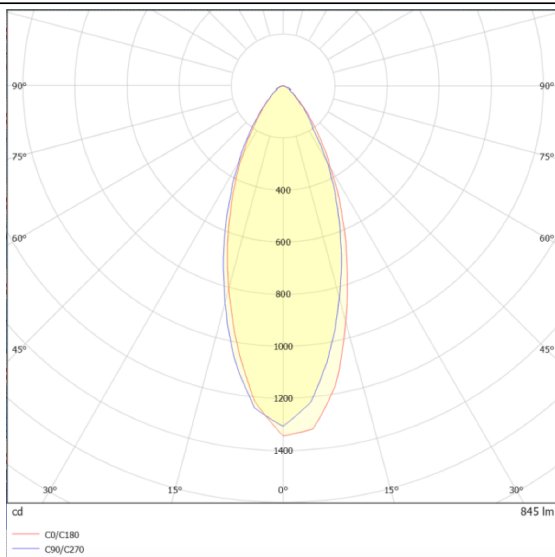
Dimensions

Product dimensions (mm) **55x80x500mm**

Scheme



Photometry



Item code	86.OIN8.1331.03
Product type	Outdoor
Category	Recessed Inground Floor
Family	LINEAR
Pictograms	

Product	
Real power (W)	24
Real luminous flux (Lm)	1390
Luminous efficiency (Lm/W)	58
Beam angle (&ordm;)	30
Life time (h)	50000h L80B10
IP	67
Electrical class insulation	Class I
Colour	Stainless steel
Control gear included	Yes
Control gear	ON-OFF
Light source	12x2,0W Osram
Colour temperature (K)	3000
Colour consistency (SDCM)	SDCM<3
CRI	80
IK	IK07