

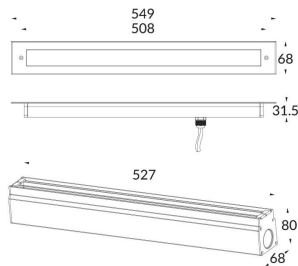


LINEAR-ASSYM

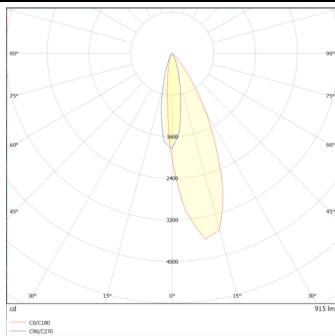
Recessed Inground Floor from the family LINEAR-ASSYM with a power of 17,5W and a beam angle of 45/35° Asymmetrical with a real lumen output of 1020 lm, and an efficiency of 58,29 lm/W, made in Extruded Aluminium Body, Die Cast Aluminium End Caps, Tempered Glass Cover and finished in Grey. ON-OFF driver.

Item code	86.OIN8.1381.03
Product type	Outdoor
Category	Recessed Inground Floor
Family	LINEAR
Subfamily	LINEAR-ASSYM
Pictograms	

Scheme



Photometry



Product	
Real power (W)	17.5
Real luminous flux (Lm)	1020
Luminous efficiency (Lm/W)	58.29
Beam angle (°)	45/35° Asymmetrical
Life time (h)	50000h L80B10
IP	67
Electrical class insulation	Class I
Colour	Grey
Control gear included	Yes
Control gear	ON-OFF
Light source	12x1.5W Osram
Colour temperature (K)	3000
Colour consistency (SDCM)	SDCM<3
CRI	80
IK	07