



**Dot**

Lavov Pixel light from the family DOT with a power of 0,9 W and RGB color. Beam angle 120 degrees. Made in die cast aluminium and PC cover. Driver not included. Controlled by DMX512 protocol. Transparent flat. Not include driver.

|                     |                        |
|---------------------|------------------------|
| <b>Item code</b>    | <b>86.OP01.1020.01</b> |
| <b>Product type</b> | <b>Outdoor</b>         |
| <b>Category</b>     | <b>Pixel Light</b>     |
| <b>Family</b>       | <b>Dot</b>             |
| <b>Subfamily</b>    | <b>Dot</b>             |

**Pictograms**

850°

CRI 80

SDCM 3

CE

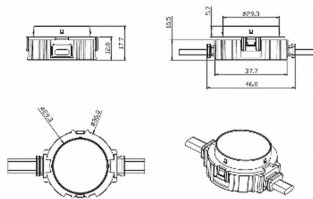
Driver EXCL.

On / Off

RGB

IP 66

**Scheme**



|                                  |                      |
|----------------------------------|----------------------|
| <b>Product</b>                   |                      |
| <b>Real power (W)</b>            | <b>0.9</b>           |
| <b>Real luminous flux (Lm)</b>   | <b>25.83</b>         |
| <b>Beam angle (°)</b>            | <b>99.78</b>         |
| <b>IP</b>                        | <b>66</b>            |
| <b>Colour</b>                    | <b>white</b>         |
| <b>Control gear included</b>     | <b>NOT</b>           |
| <b>Light source</b>              | <b>LED</b>           |
| <b>Type of LED</b>               | <b>4 CREE SMD</b>    |
| <b>Average life time (h)</b>     | <b>80000h L70B10</b> |
| <b>Colour temperature (K)</b>    | <b>RGB</b>           |
| <b>Colour consistency (SDCM)</b> | <b>SDCM&lt;3</b>     |