



STEP

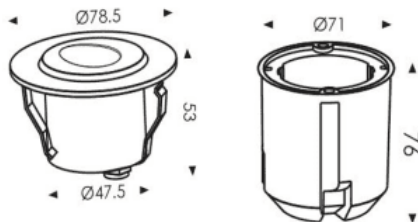
Lavov recessed fixture from the family STEP with a power of 2W and a Assymetric 45 beam angle. Finished in Gold colour. Dimensions $\varnothing 78.5 \times 73 \text{mm}$. With a total lumen output of 60lm and a luminous efficiency of 30lm/W. CCT 3000K. Driver ON-OFF. Made in Molded Stainless Steel Body. .IP65. IK10

Item code	86.ORW2.1351.06
Product type	Outdoor
Category	Recessed Wall & Ceiling
Family	STEP
Pictograms	

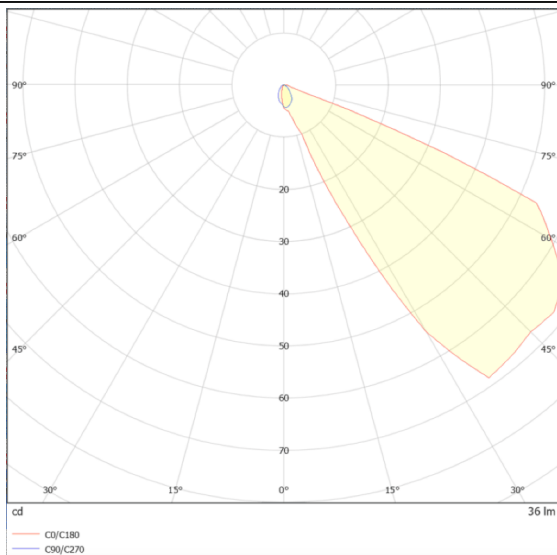
Dimensions

Product dimensions (mm) **$\varnothing 78.5 \times 73 \text{mm}$**

Scheme



Photometry



Product	
Real power (W)	2
Real luminous flux (Lm)	60
Luminous efficiency (Lm/W)	30
Beam angle (&ordm;)	Assymetric 45
Life time (h)	50000h L70B10
IP	IP65
Electrical class insulation	Class I
Colour	Gold
Control gear included	Yes
Control gear	ON-OFF
Flicker Free	Yes
Light source	LED
Colour temperature (K)	3000
Colour consistency (SDCM)	SDCM<3
CRI	80
IK	IK10