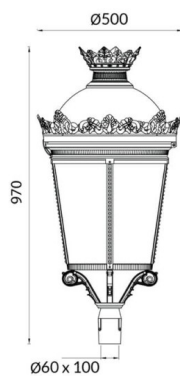




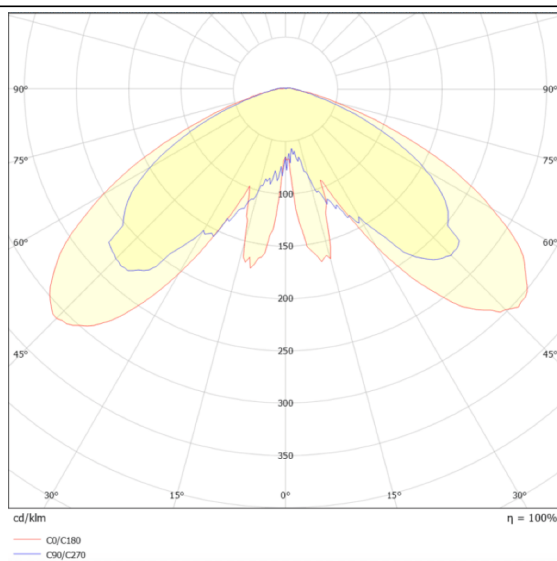
GRANVIA C

Lavov Street Light from the family GRAN VIA with a power of 40W and a lighting distribution type T1 with a real lumen output of 4323,12 lm, and an efficiency of 108,08 lm/W, CRI ≥ 70 with a ON-OFF driver, made in die cast aluminium Body, Front Tempered Glass and finished in Black color. External transparent diffuser.

Scheme



Photometry



| | |
|--------------|-----------------|
| Item code | 86.OS09.2311.02 |
| Product type | Outdoor |
| Category | Street lights |
| Family | GRAN VIA |
| Subfamily | GRANVIA C |
| Pictograms | |

| | |
|----------------------------|---------------|
| Product | |
| Real power (W) | 40 |
| Real luminous flux (Lm) | 4323.12 |
| Luminous efficiency (Lm/W) | 108.078 |
| Colour | black |
| Control gear included | yes |
| Control gear | ON-OFF |
| Light source | LED |
| Type of LED | PHILIPS 5050 |
| Average life time (h) | 50000h L70B62 |
| Colour temperature (K) | 3000K |
| Colour consistency (SDCM) | 5 |
| CRI | >80 |
| IK | IK08 |