



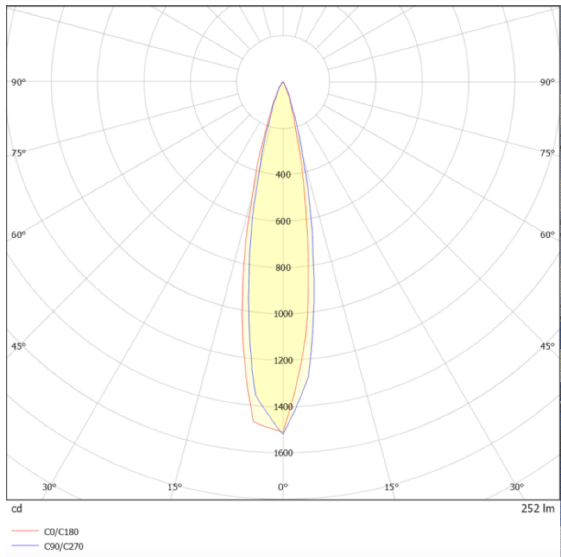
DOWNT

DOWNT is a wall light with round design emitting light downwards. With a size of Ø60mmx130mm, and a power of 4,5W, has a reflector with 24 degrees beam angle. With a real lumen output of 254lm, and an efficiency of 56.44lm/W. Is made in Die Cast Aluminium Body, Tempered Glass Cover and has an IP65 and an IK05 degree of protection. ON-OFF driver. Finished in White color.

Scheme



Photometry



| | |
|--------------|-----------------|
| Item code | 86.OW08.1321.01 |
| Product type | Outdoor |
| Category | Wall Light |
| Family | DOWNT |
| Pictograms | |

| | |
|-----------------------------|---------------|
| Product | |
| Real power (W) | 4.5 |
| Real luminous flux (Lm) | 254 |
| Luminous efficiency (Lm/W) | 56.44 |
| Beam angle (°) | 24 |
| Life time (h) | 50000h L70B10 |
| IP | 65 |
| Electrical class insulation | Class I |
| Colour | White |
| Chip Brand | NICHIA |
| Control gear included | Yes |
| Control gear | ON-OFF |
| Colour temperature (K) | 3000 |
| Colour consistency (SDCM) | SDCM<3 |
| CRI | 80 |
| IK | IK05 |