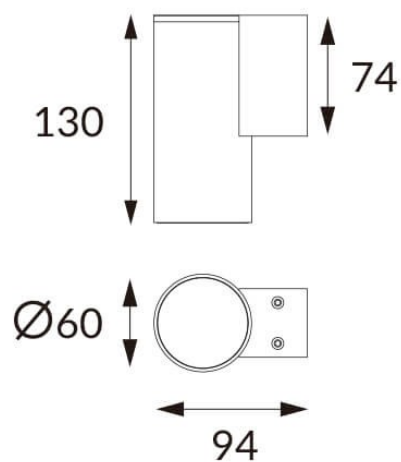
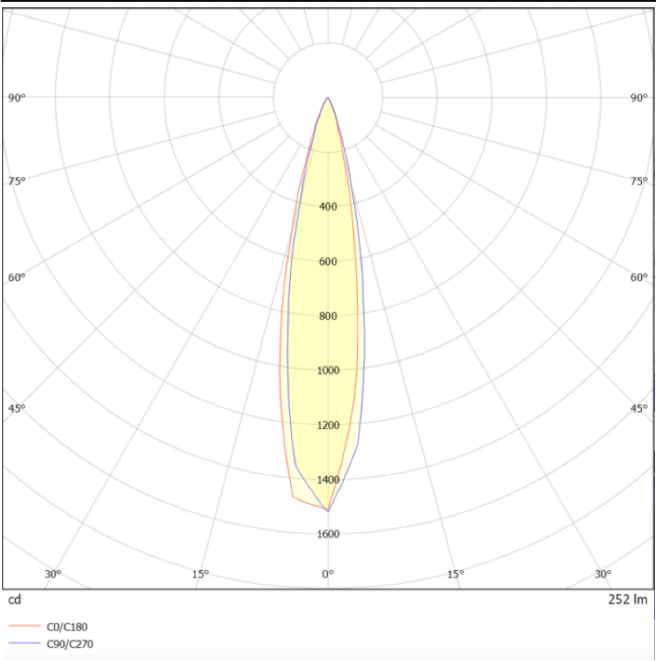




Scheme



Photometry



DOWNT

DOWNT is a wall light with round design emitting light downwards. With a size of Ø60mmx130mm, and a power of 4,5W, has a reflector with 24 degrees beam angle. With a real lumen output of 254lm, and an efficiency of 56.44lm/W. Is made in Die Cast Aluminium Body, Tempered Glass Cover and has an IP65 and an IK05 degree of protection. ON-OFF driver. Finished in Grey color.

Item code	86.OW08.1321.03
Product type	Outdoor
Category	Wall Light
Family	DOWNT
Pictograms	<div><div></div><div>50 60 Hz</div><div>220 240 V</div><div></div><div>CRI 80</div></div> <div><div>SDCM 3</div><div>CE</div><div>Driver INCL.</div><div></div><div>50000h L70B10</div></div> <div><div>IP 65</div><div>IK 05/10</div></div>

Product	
Real power (W)	4.5
Real luminous flux (Lm)	254
Luminous efficiency (Lm/W)	56.44
Beam angle (°)	24
Life time (h)	50000h L70B10
IP	65
Electrical class insulation	Class I
Colour	Grey
Chip Brand	NICHIA
Control gear included	Yes
Control gear	ON-OFF
Colour temperature (K)	3000
Colour consistency (SDCM)	SDCM<3
CRI	80
IK	IK05