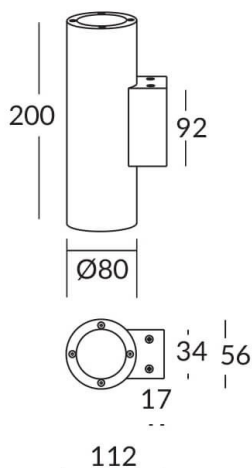




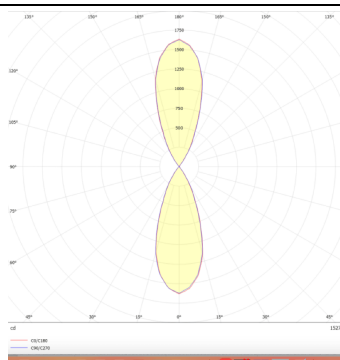
UP&DOWN TUBE

UP&DOWN TUBE is a wall light with round design emitting light up and down. With a size of Ø80mmx200mm has a power of 2x8W and two reflectors up&down of 38 degrees beam angle. With a real lumen output of 1972lm, and an efficiency of 123.25lm/W. Is made in Die Cast Aluminium Body, Tempered Glass Cover and has an IP65 and an IK10 degree of protection. ON-OFF driver. Finished in Black color.

Scheme



Photometry



| | |
|--------------|--|
| Item code | 86.OW09.2331.02 |
| Product type | Indoor |
| Category | Wall Light |
| Family | UP&DOWN TUBE |
| Pictograms | <div> </div> <div> </div> <div> </div> |

| | |
|-----------------------------|---------------|
| Product | |
| Real power (W) | 8 |
| Real luminous flux (Lm) | 1972 |
| Luminous efficiency (Lm/W) | 123.25 |
| Beam angle (°) | 38 |
| Life time (h) | 50000h L70B10 |
| IP | 65 |
| Electrical class insulation | Class I |
| Colour | Black |
| Control gear included | Yes |
| Control gear | ON-OFF |
| Colour temperature (K) | 3000 |
| Colour consistency (SDCM) | SDCM<3 |
| CRI | 80 |
| IK | 10 |