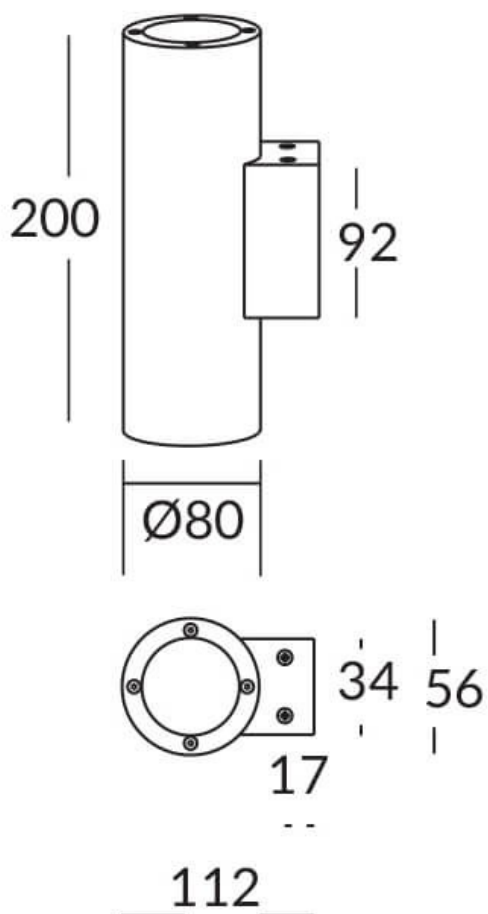
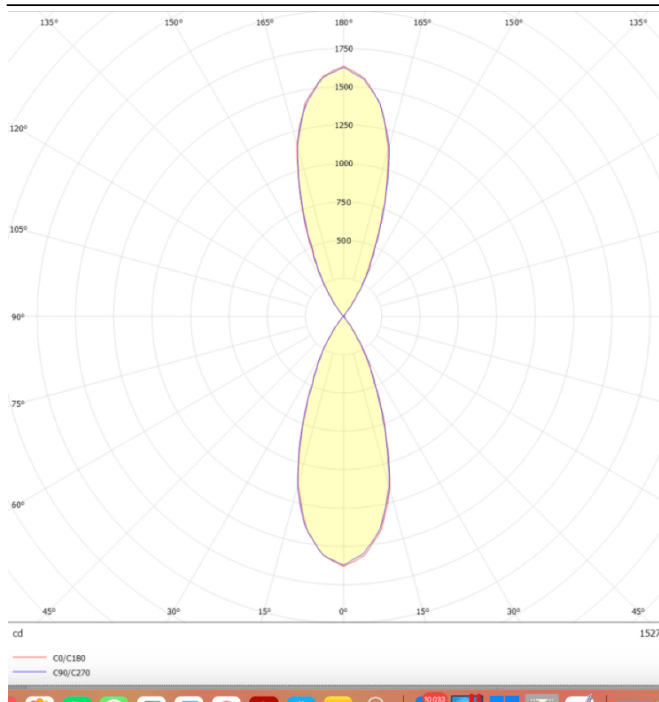




Scheme



Photometry



UP&DOWNT

UP&DOWNT is a wall light with round design emitting light up and down. With a size of Ø80mmx200mm has a power of 2x8W and two reflectors up&down of 38 degrees beam angle. With a real lumen output of 1972lm, and an efficiency of 123.25lm/W. Is made in Die Cast Aluminium Body, Tempered Glass Cover and has an IP65 and an IK10 degree of protection. ON-OFF driver. Finished in Grey color.

| | |
|---------------------|--|
| Item code | 86.OW09.2331.03 |
| Product type | Indoor |
| Category | Wall Fixtures & Reading lights |
| Family | UP&DOWNT |
| Pictograms | <div> <div> </div> <div> 50 60 Hz </div> <div> 220 240 V </div> <div> </div> <div> CRI 80 </div> </div> <div> <div>SDCM 3</div> <div>CE</div> <div>Driver INCL.</div> <div> </div> <div>50000h L70B10</div> </div> <div> <div>IP 65</div> <div>IK 05/10</div> </div> |

| | |
|------------------------------------|----------------------|
| Product | |
| Real power (W) | 8 |
| Real luminous flux (Lm) | 1972 |
| Luminous efficiency (Lm/W) | 123.25 |
| Beam angle (°) | 38 |
| Life time (h) | 50000h L70B10 |
| IP | 65 |
| Electrical class insulation | Class I |
| Colour | Grey |
| Chip Brand | NICHIA |
| Control gear included | Yes |
| Control gear | ON-OFF |
| Colour temperature (K) | 3000 |
| Colour consistency (SDCM) | SDCM<3 |
| CRI | 80 |
| IK | IK10 |