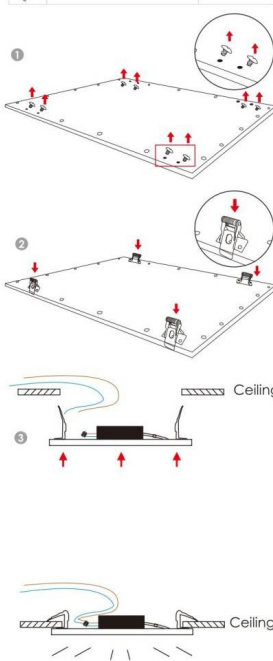




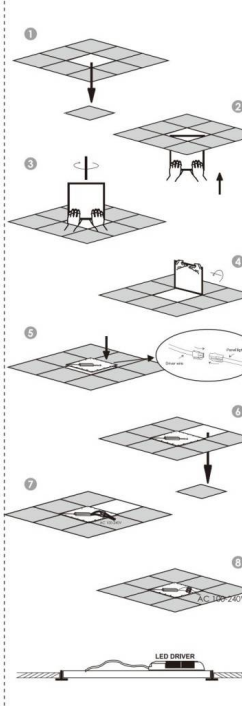
- Installation and wiring of luminaire must be in accordance with all applicable local codes.
- Installation, inspection, and maintenance of luminaires should be performed by a qualified electrician.
- DO NOT make or alter any open holes in the luminaire. Do not modify the luminaire.
- DO NOT install damaged product.
- Make sure electrical power is OFF before and during installation and maintenance.
- Make sure the equipment is properly grounded.
- Make sure the supply voltage is same as the rated fixture voltage.

► RECESSED IN A CUT-OUT HOLE

| Accessories | 3030 | 3040 | 4040 | 4242 | 30120 | 40120 |
|-------------|------|------|------|------|-------|-------|
|             |      | X 4  |      |      | X 6   |       |

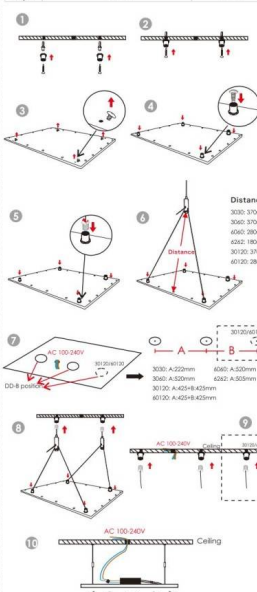


► RECESSED IN FALSE-CEILING FRAME



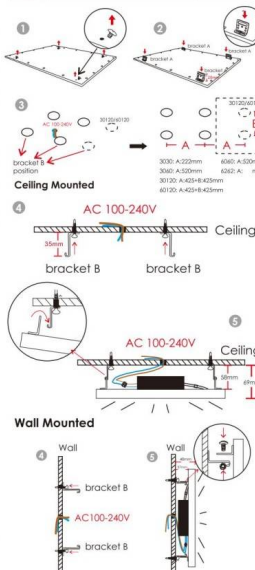
► SUSPENSION

| Accessories | 3030 | 3040 | 4040 | 4242 | 30120 | 40120 |
|-------------|------|------|------|------|-------|-------|
|             |      | X 2  |      |      | X 3   |       |
|             |      | X 2  |      |      | X 3   |       |
|             |      | X 4  |      |      | X 6   |       |
|             |      | X 2  |      |      | X 3   |       |
|             |      | X 2  |      |      | X 3   |       |



► CEILING & WALL MOUNTED

| Accessories | 3030 | 3040 | 4040 | 4242 | 30120 | 40120 |
|-------------|------|------|------|------|-------|-------|
|             |      | X 4  |      |      | X 6   |       |
|             |      | X 4  |      |      | X 6   |       |
|             |      | X 4  |      |      | X 6   |       |
|             |      | X 4  |      |      | X 6   |       |
|             |      | X 4  |      |      | X 6   |       |
|             |      | X 4  |      |      | X 6   |       |



► FRAME MOUNTED

| Accessories | 3030 | 3040 | 4040 | 4242 | 30120 | 40120 |
|-------------|------|------|------|------|-------|-------|
| Frame A     |      |      | X 2  |      |       | X 2   |
| Frame B     |      |      | X 2  |      |       | X 2   |
|             |      |      | X 8  |      |       | X 8   |
|             |      |      | X 4  |      |       | X 6   |

