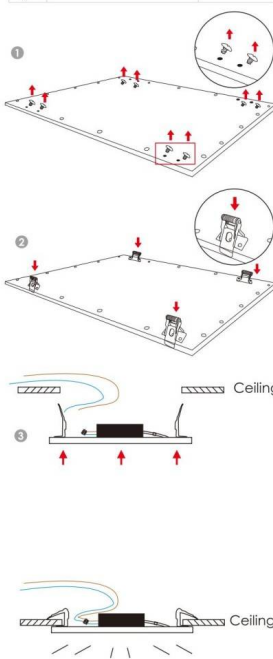




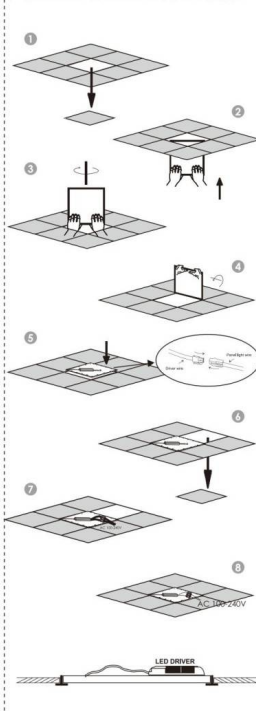
- Installation and wiring of luminaire must be in accordance with all applicable local codes.
- Installation, inspection, and maintenance of luminaires should be performed by a qualified electrician.
- DO NOT make or alter any open holes in the luminaire. Do not modify the luminaire.
- DO NOT install damaged product.
- Make sure electrical power is OFF before and during installation and maintenance.
- Make sure the equipment is properly grounded.
- Make sure the supply voltage is same as the rated fixture voltage.

► RECESSED IN A CUT-OUT HOLE

| Accessories | 3030 | 3040 | 4040 | 4242 | 30120 | 40120 |
|-------------|------|------|------|------|-------|-------|
| | | | | | X 4 | X 6 |

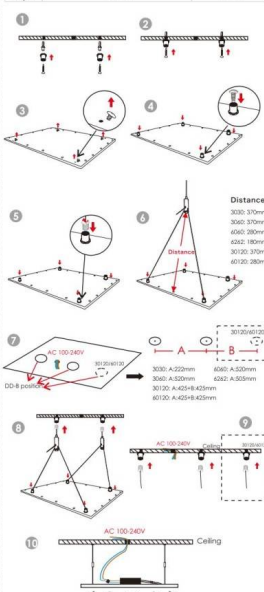


► RECESSED IN FALSE-CEILING FRAME



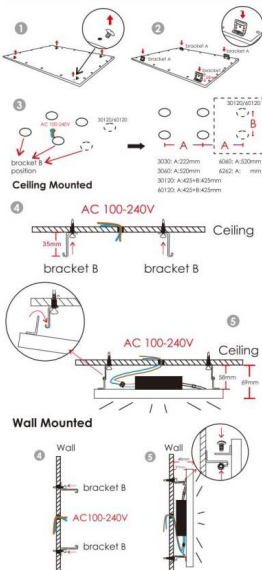
► SUSPENSION

| Accessories | 3030 | 3040 | 4040 | 4242 | 30120 | 40120 |
|-------------|------|------|------|------|-------|-------|
| | X 2 | X 2 | X 2 | X 2 | X 3 | X 3 |
| | X 2 | X 2 | X 2 | X 2 | X 3 | X 3 |
| | X 4 | X 4 | X 4 | X 4 | X 6 | X 6 |
| | X 2 | X 2 | X 2 | X 2 | X 3 | X 3 |
| | X 2 | X 2 | X 2 | X 2 | X 3 | X 3 |



► CEILING & WALL MOUNTED

| Accessories | 3030 | 3040 | 4040 | 4242 | 30120 | 40120 |
|-------------|------|------|------|------|-------|-------|
| | X 4 | X 4 | X 4 | X 4 | X 6 | X 6 |
| | X 4 | X 4 | X 4 | X 4 | X 6 | X 6 |
| | X 4 | X 4 | X 4 | X 4 | X 6 | X 6 |
| | X 4 | X 4 | X 4 | X 4 | X 6 | X 6 |
| | X 4 | X 4 | X 4 | X 4 | X 6 | X 6 |



► FRAME MOUNTED

| Accessories | 3030 | 3040 | 4040 | 4242 | 30120 | 40120 |
|-------------|------|------|------|------|-------|-------|
| Frame A | | | X 2 | | | X 2 |
| Frame B | | | X 2 | | | X 2 |
| | | | X 8 | | | X 8 |
| | | | X 4 | | | X 6 |

