



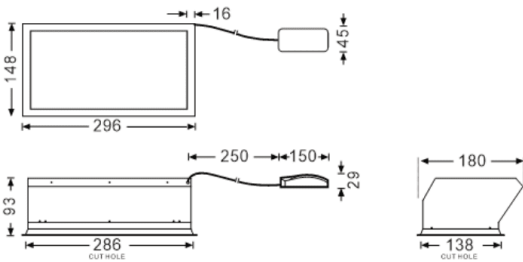
**Sky downlight assymmetric**

Lavov recessed luminaire from the family Sky downlight assymmetric with a power of 32W and a beam angle of 30° side 38° . UGR15. Finished in White colour. With a total lumen output of 1792lm and a luminous efficacy of 56lm/W. Made in Aluminum Frame + Steel housing and PMMA lens. Driver On-Off. CCT 6500K. CRI>90. Dimensions 296\*148\*93mm.

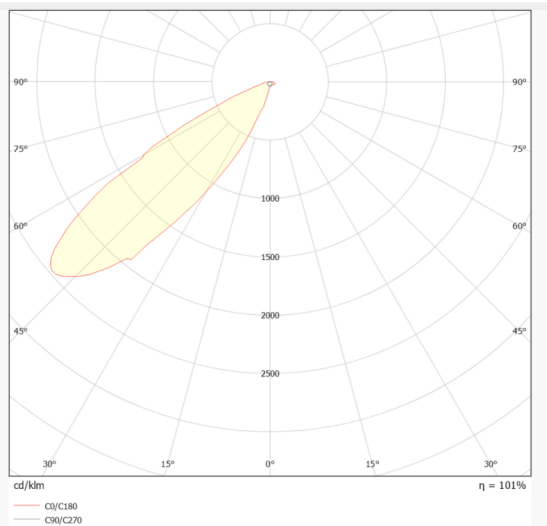
**Dimensions**

**Product dimensions (mm)**                    **296\*148\*93mm**

**Scheme**



**Photometry**



<b>Item code</b>	<b>86.R022.1561.01</b>
<b>Product type</b>	<b>Indoor</b>
<b>Category</b>	<b>Recessed Fixtures</b>
<b>Family</b>	<b>SKYPANEL</b>
<b>Subfamily</b>	<b>Sky downlight assymmetric</b>
<b>Pictograms</b>	

<b>Product</b>	
<b>Real power (W)</b>	<b>32</b>
<b>Real luminous flux (Lm)</b>	<b>1792</b>
<b>Luminous efficiency (Lm/W)</b>	<b>56</b>
<b>Beam angle (°)</b>	<b>30° side 38°</b>
<b>Life time (h)</b>	<b>80000h L80B10</b>
<b>IP</b>	<b>20</b>
<b>Electrical class insulation</b>	<b>II</b>
<b>Colour</b>	<b>White</b>
<b>U. G. R</b>	<b>15</b>
<b>Control gear included</b>	<b>Yes</b>
<b>Control gear</b>	<b>On-Off</b>
<b>Light source</b>	<b>LED</b>
<b>Type of LED</b>	<b>SMD</b>
<b>Colour temperature (K)</b>	<b>6500</b>
<b>Colour consistency (SDCM)</b>	<b>SDCM3</b>
<b>CRI</b>	<b>90</b>
<b>IK</b>	<b>04</b>

