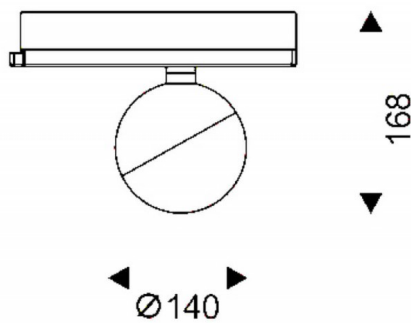




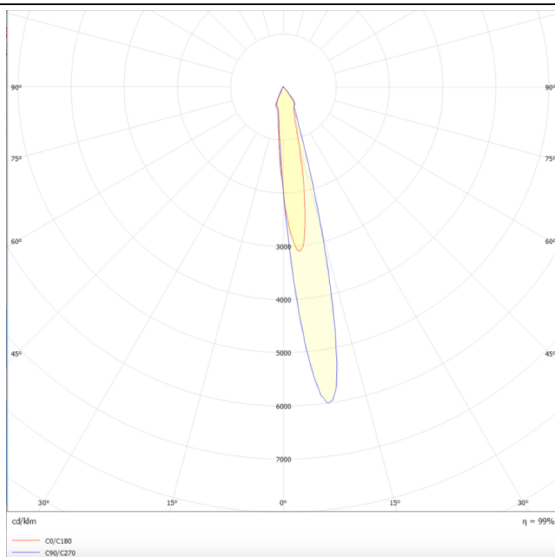
Luxball

Lavov Tracklight from the family Luxball with a power of 30W and an optic of 15 degrees with a total lumen output of 1870 lm and an efficiency of 62,3 lm/W. CCT 3000 Kelvin. Made in Die Cast Aluminum and finished in Black colour. DALI driver.

Scheme



Photometry



| | |
|--------------|-----------------|
| Item code | 86.T008.2313.02 |
| Product type | Indoor |
| Category | Tracklights |
| Family | Luxball |
| Subfamily | Luxball |
| Pictograms | |

| | |
|-----------------------------|---------------|
| Product | |
| Real power (W) | 30 |
| Real luminous flux (Lm) | 1870 |
| Luminous efficiency (Lm/W) | 62.33 |
| Beam angle (º) | 15 |
| Life time (h) | 50000h L80B10 |
| IP | 20 |
| Electrical class insulation | Class I |
| Operating temperature | -20 +35 |
| Colour | Black |
| Chip Brand | Philip |
| Control gear included | yes |
| Control gear | DALI |
| Light source | LED |
| Type of LED | COB |
| Colour temperature (K) | 3000 |
| Colour consistency (SDCM) | SDCM<3 |
| CRI | 90 |