
**INDOOR / DOWNLIGHTS DE
SUPERFICIE / QUADRO / QUADRO
UP&DOWN**

Código artículo 86.SD10.1301.01

LAVOV
L I G H T I N G



LED Ceiling light
DOR/DOS

DOR450

DOR320

DOR260

DOR360

DOR300

DOS320

DOS260

DOS360

DOS300

IP54

Required Tools

WARNING:

ON

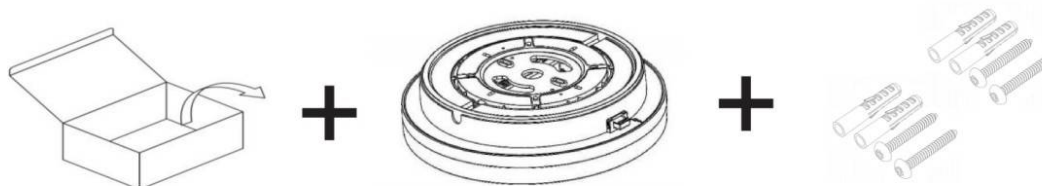
OFF

Check that the power is off before
conducting any maintenance and
assembly work

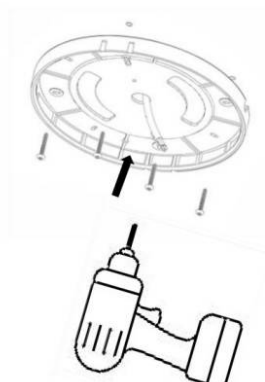
Caution,danger of electric shock

The installation and commissioning of the
luminaire as well as any modification to the
luminaire may only be performed by authorized
personnel (qualified electrician).

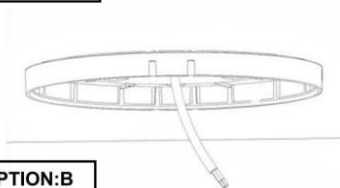
Step:1



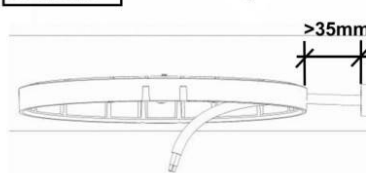
STEP:2



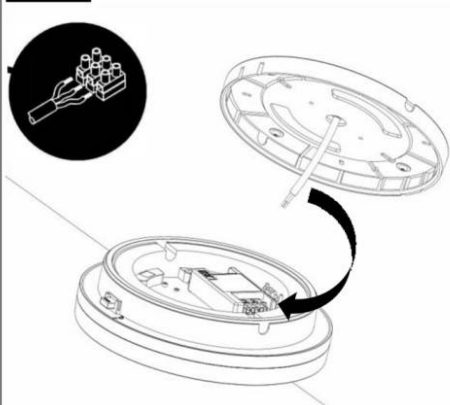
OPTION:A



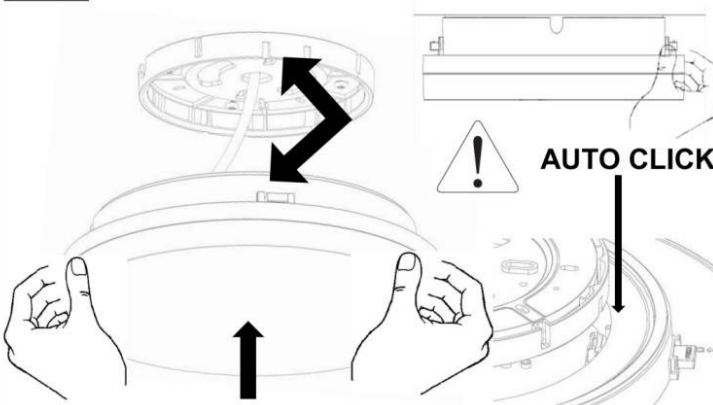
OPTION:B



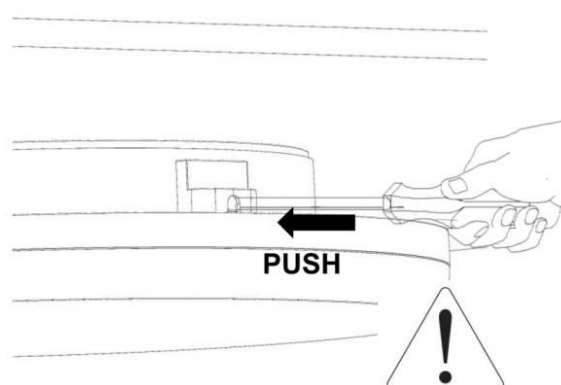
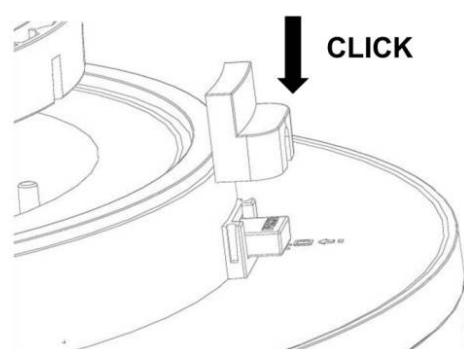
STEP:3



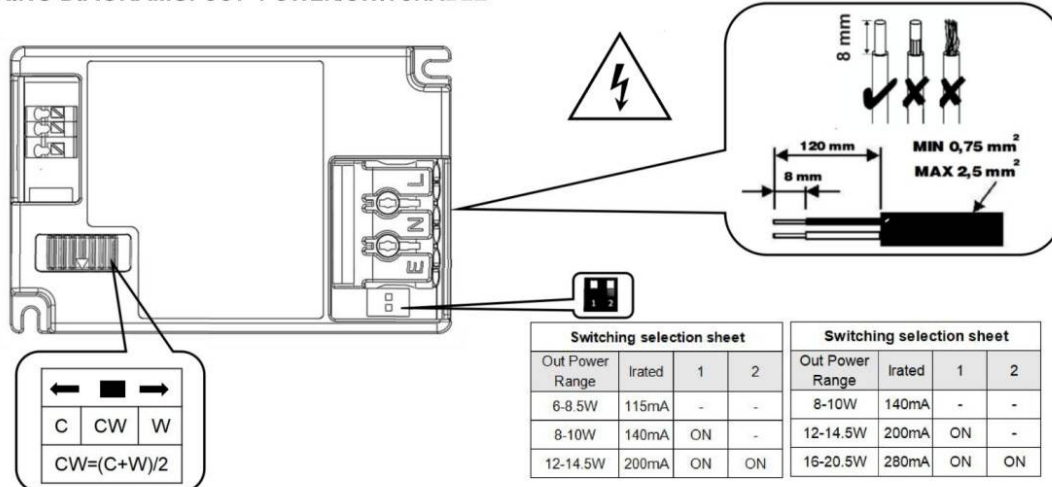
STEP:4



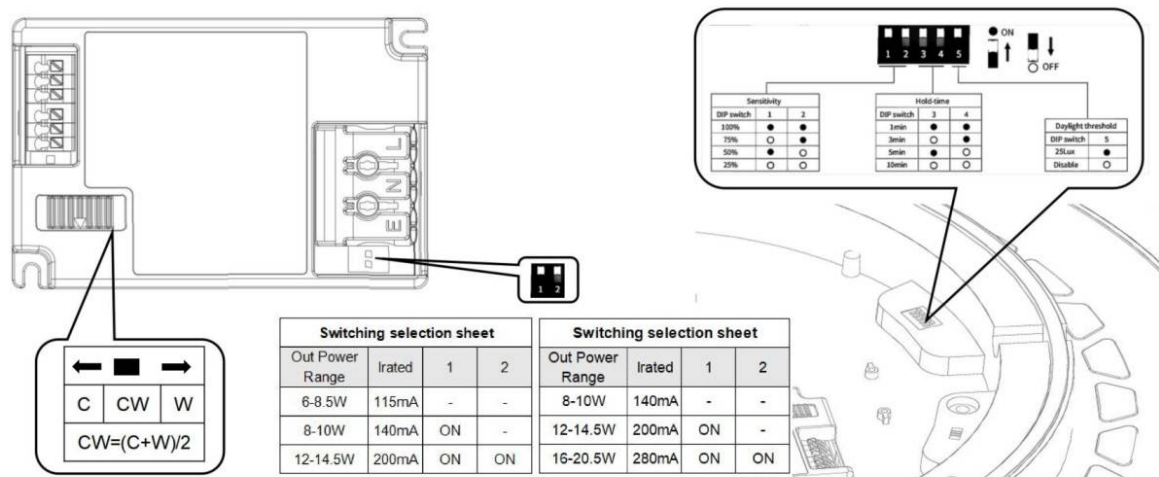
OPTION--SAFETY COVER



I. WIRING DIAGRAMS: CCT+POWER/SWITCHABLE



II. WIRING DIAGRAMS: CCT+POWER/SWITCHABLE+SENSOR/EM2



III. WIRING DIAGRAMS: CCT+DALI (TCI DT6)

