



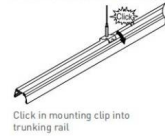
### Tracking and luminaire:

First trunking rail should have one side connecting plate&last trunking rail with no connecting plate on both sides, then fix the Luminaire to trunking rail then lock holder, then keep end caps at both sides.



### Step 1 Mounting Suspension

Adjust length of suspension cord:  
a. press down Hexagon bolt;  
b. Pull in/out cord to adjust length



### Step 2 Connecting Power Supply

Put in conduit with cable inside and pull up conduit gland to lock



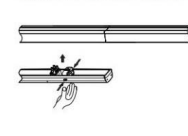
### Step 3 Connecting Trunking Rail

Both trunking rails should keep in perfect position then push to click

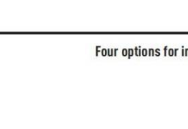


### Step 4 Mounting Luminaire

Click in mounting clip into trunking rail



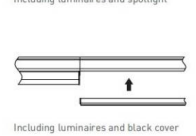
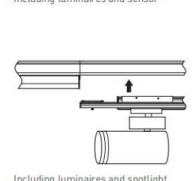
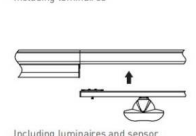
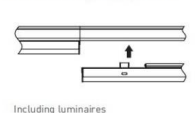
Slide knob to select phase L1/L2/L3



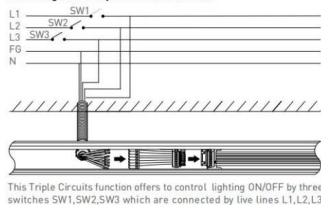
Make sure male & female connectors in right position then fix the luminaire to trunking rail



### Step 5 LED linear lighting system

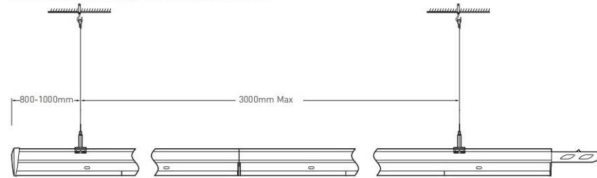


### Wire diagram of triple circuits function



### Pendant and mounting installation

Starting Installation distances point should be 800 mm to 1000 mm, then in between 1st & 2nd point should be 3000 mm max



### Four options for installation



Safety notes:  
Installation should be performed only by  
qualified electrician .

- Make sure no voltage while installation .
- Connect cable wires according to wire labeling .
- Max current should not exceed 16A in one power feed in circuit.



LED linear lighting System composition

#### Terminal module:

Terminal module can be independently installed as  
a single unit, it also can be connected at end of one  
linear light row.



#### Step 1 Mounting Suspension

Drill a hole on ceiling



Adjust length of suspension cord:  
a. press down Hexagon bolt;  
b. Pull in/out cord to adjust length



#### Step 2 Connecting Power Supply

Cut the Rubber cap to pass the power  
cable



Put in conduit with cable inside and  
pull up conduit gland to lock.

#### Step 3 Mounting Luminaire



Slide knob to select phase L1/L2/L3



Make sure male & female connectors  
in right position then fix the luminaire  
to trunking rail

