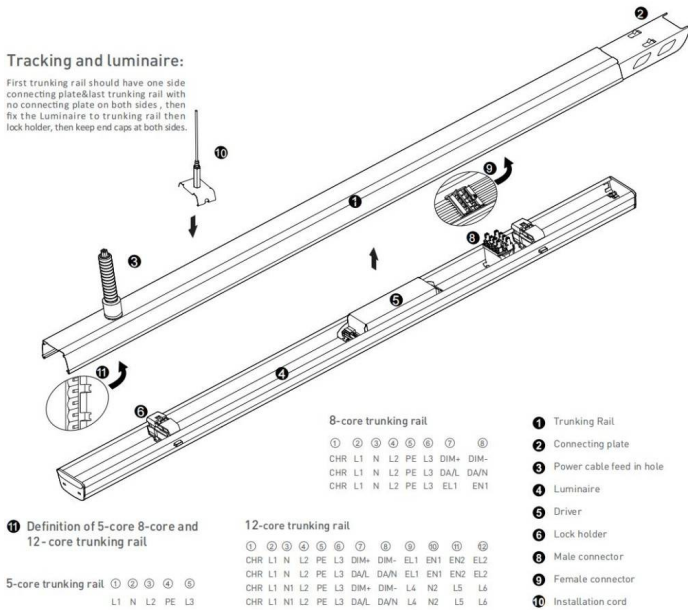




Tracking and luminaire:

First trunking rail should have one side connecting plate&last trunking rail with no connecting plate on both sides, then fix the Luminaire to trunking rail then lock holder, then keep end caps at both sides.

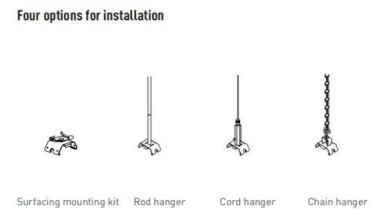
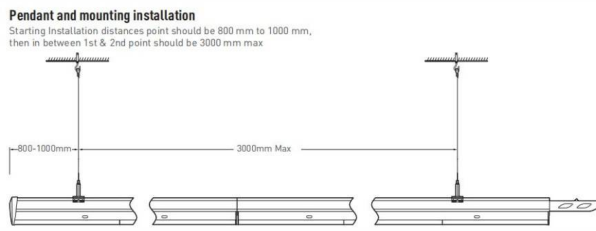
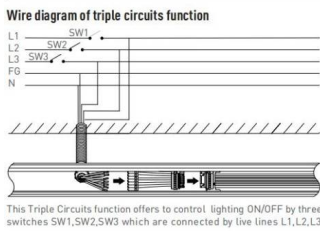
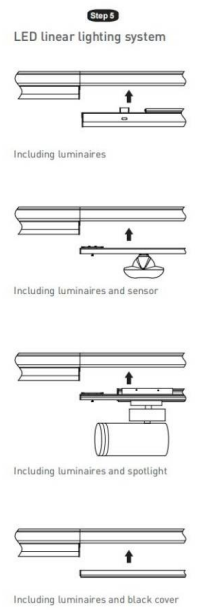
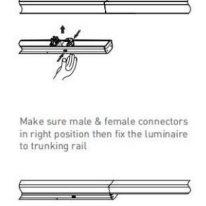
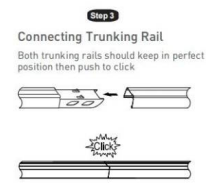
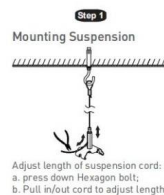


1 Definition of 5-core 8-core and 12-core trunking rail

5-core trunking rail ① ② ③ ④ ⑤
L1 N L2 PE L3

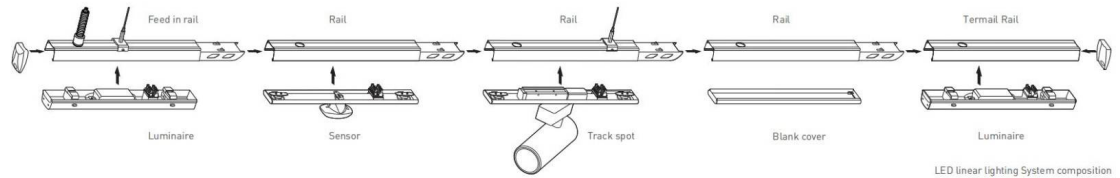
12-core trunking rail

① ② ③ ④ ⑤ ⑥ ⑦ ⑧ ⑨ ⑩ ⑪ ⑫
CHR L1 N L2 PE L3 DIM- DIM+ EL1 EN1 EN2 EL2
CHR L1 N L2 PE L3 DA/L DA/N EL1 EN1 EN2 EL2
CHR L1 N1 L2 PE L3 DIM- DIM+ L4 N2 L5 L6
CHR L1 N1 L2 PE L3 DA/L DA/N L4 N2 L5 L6



Safety notes:
Installation should be performed only by qualified electrician.

- Make sure no voltage while installation.
- Connect cable wires according to wire labeling.
- Max current should not exceed 16A in one power feed in circuit.



Terminal module:

Terminal module can be independently installed as a single unit, it also can be connected at end of one linear light row.

