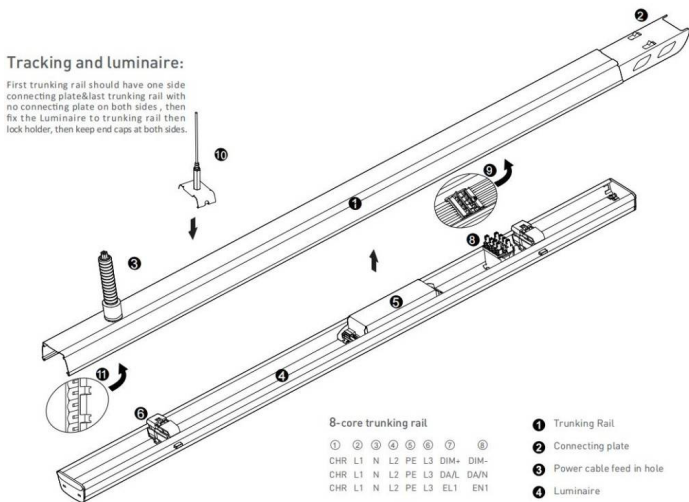




Tracking and luminaire:

First trunking rail should have one side connecting plate&last trunking rail with no connecting plate on both sides, then fix the Luminaire to trunking rail then lock holder, then keep end caps at both sides.



8-core trunking rail

- ① ② ③ ④ ⑤ ⑥ ⑦ ⑧
- CHR L1 N L2 PE L3 DIM+ DIM-
- CHR L1 N L2 PE L3 DA/L DA/N
- CHR L1 N L2 PE L3 EL1 EN1

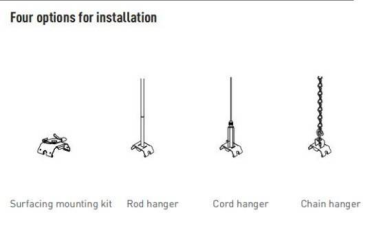
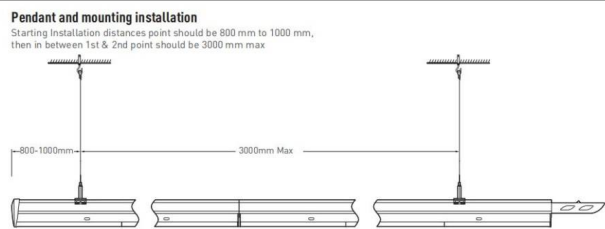
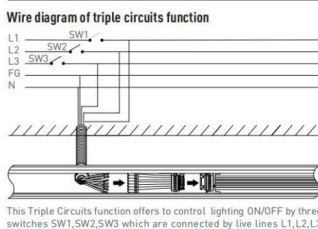
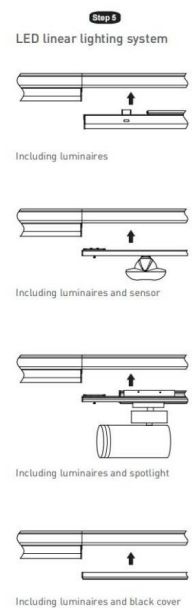
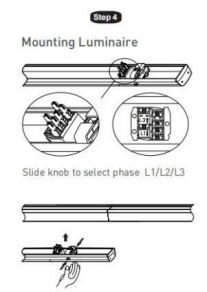
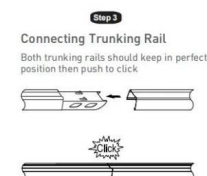
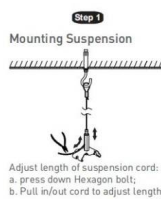
- ① Trunking Rail
- ② Connecting plate
- ③ Power cable feed in hole
- ④ Luminaire
- ⑤ Driver
- ⑥ Lock holder
- ⑦ Male connector
- ⑧ Female connector
- ⑨ Installation cord

12-core trunking rail

- ① ② ③ ④ ⑤ ⑥ ⑦ ⑧ ⑨ ⑩ ⑪ ⑫
- CHR L1 N L2 PE L3 DIM+ DIM- EL1 EN1 EN2 EL2
- CHR L1 N L2 PE L3 DA/L DA/N EL1 EN1 EN2 EL2
- CHR L1 N1 L2 PE L3 DIM+ DIM- L4 N2 L5 L6
- CHR L1 N1 L2 PE L3 DA/L DA/N L4 N2 L5 L6

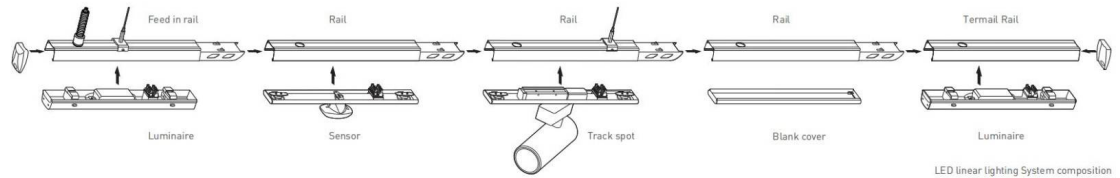
Definition of 5-core 8-core and 12-core trunking rail

- 5-core trunking rail** ① ② ③ ④ ⑤
- L1 N L2 PE L3



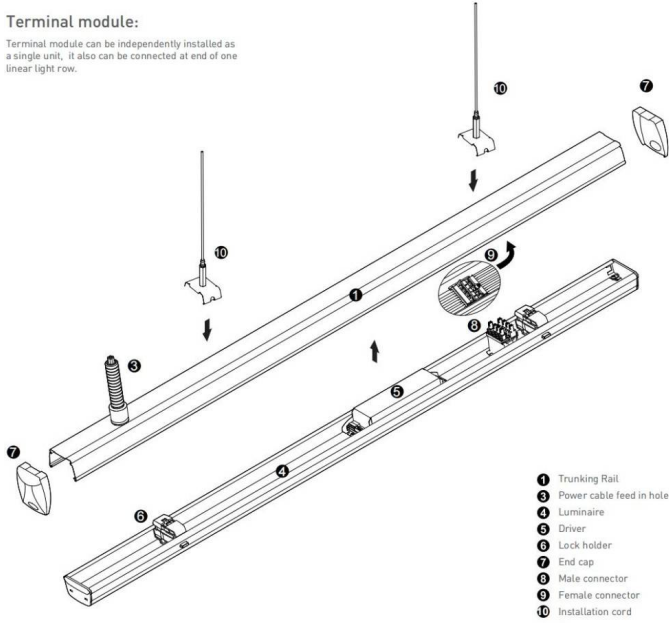
Safety notes:
Installation should be performed only by qualified electrician.

- Make sure no voltage while installation.
- Connect cable wires according to wire labeling.
- Max current should not exceed 16A in one power feed in circuit.

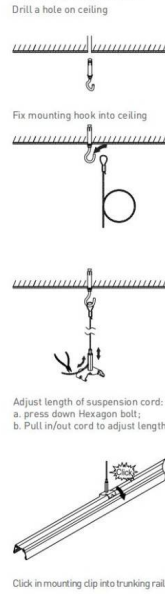


Terminal module:

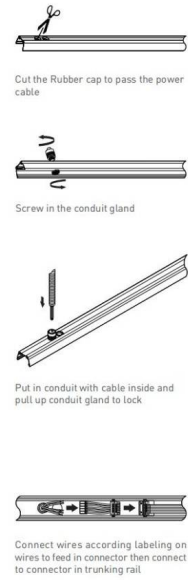
Terminal module can be independently installed as a single unit, it also can be connected at end of one linear light row.



Step 1
Mounting Suspension



Step 2
Connecting Power Supply



Step 3
Mounting Luminaire

