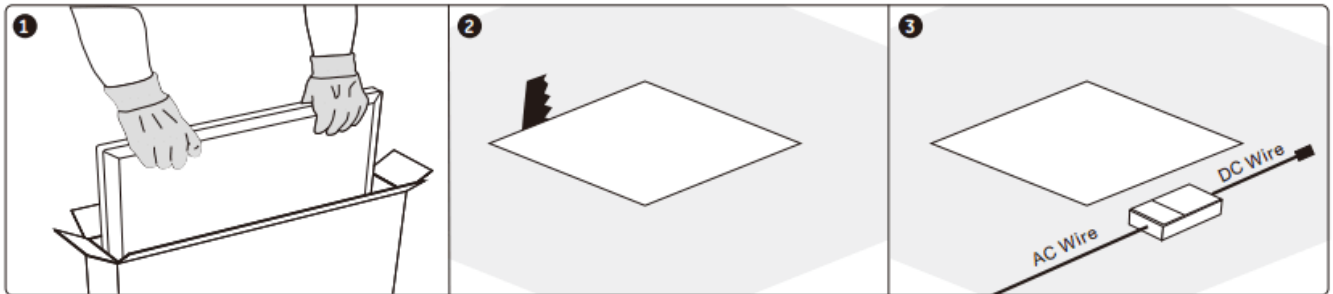


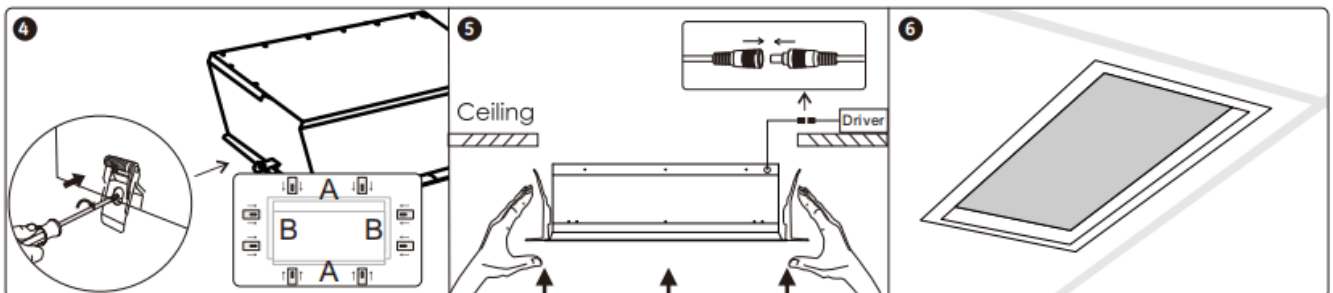
## Recessed Plasterboard Cut Hole Ceiling Installation



1 Take the panel out of the box and protective bag, Remove the protective film.

2 Cut a square hole in the ceiling 10mm smaller than the LED Panel.

3 Connect the LED Driver to AC mains.



4 Screw the springs. (optional Locked by default)  
If String Closely installation, need to change the position of the springs.

5 Connect the DC connector from driver to panel.  
Push the Light into the ceiling with the springs raised.  
Pay attention to the direction of light.

6 Tear off the protective film of the lampshade and turn on the skylight.

### Installation Location

