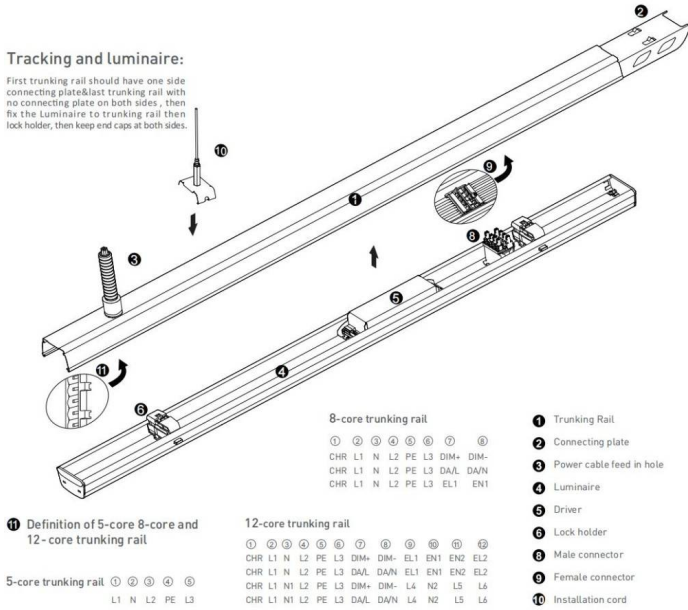




Tracking and luminaire:

First trunking rail should have one side connecting plate&last trunking rail with no connecting plate on both sides, then fix the Luminaire to trunking rail then lock holder, then keep end caps at both sides.



① Definition of 5-core 8-core and 12-core trunking rail

5-core trunking rail ① ② ③ ④ ⑤

L1 N L2 PE L3

12-core trunking rail

① ② ③ ④ ⑤ ⑥ ⑦ ⑧ ⑨ ⑩ ⑪ ⑫

CHR L1 N L2 PE L3 DIM- DIM+ EL1 EN1 EN2 EL2

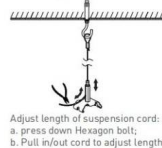
CHR L1 N L2 PE L3 DAL DA/N EL1 EN1 EN2 EL2

CHR L1 N1 L2 PE L3 DIM- DIM+ L4 N2 L5 L6

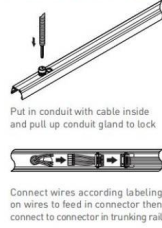
CHR L1 N1 L2 PE L3 DAL DA/N L4 N2 L5 L6

- ① Trunking Rail
- ② Connecting plate
- ③ Power cable feed in hole
- ④ Luminaire
- ⑤ Driver
- ⑥ Lock holder
- ⑦ Male connector
- ⑧ Female connector
- ⑨ Installation cord

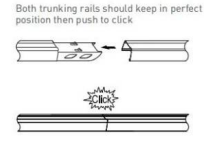
Step 1
Mounting Suspension



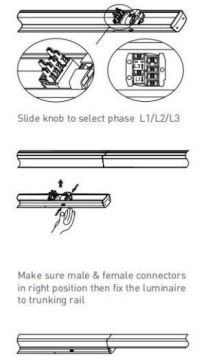
Step 2
Connecting Power Supply



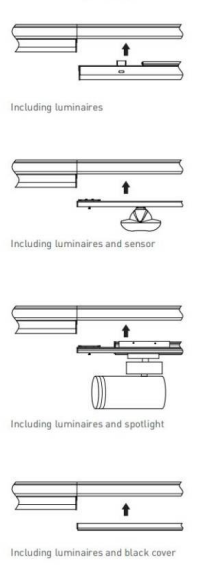
Step 3
Connecting Trunking Rail



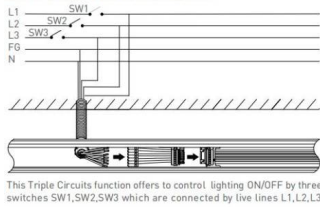
Step 4
Mounting Luminaire



Step 5
LED linear lighting system

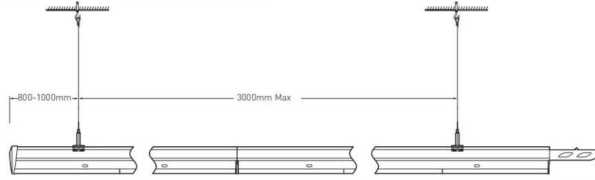


Wire diagram of triple circuits function



Pendant and mounting installation

Starting Installation distances point should be 800 mm to 1000 mm, then in between 1st & 2nd point should be 3000 mm max

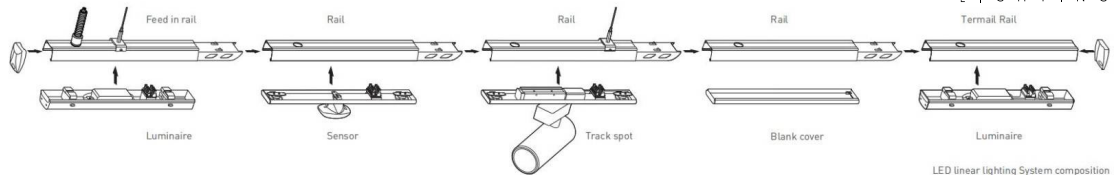


Four options for installation



Safety notes:
Installation should be performed only by qualified electrician.

- Make sure no voltage while installation.
- Connect cable wires according to wire labeling.
- Max current should not exceed 16A in one power feed in circuit.



Terminal module:

Terminal module can be independently installed as a single unit, it also can be connected at end of one linear light row.

