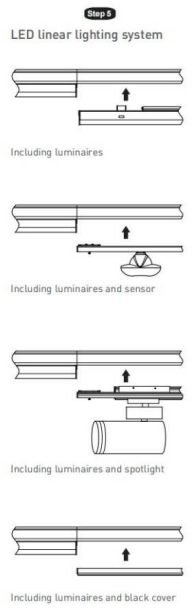
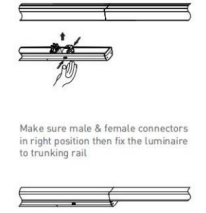
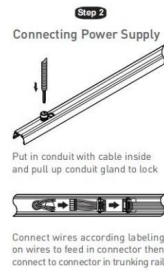


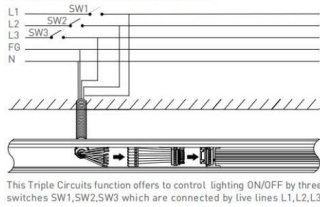


**Tracking and luminaire:**

First trunking rail should have one side connecting plate & last trunking rail with no connecting plate on both sides, then fix the Luminaire to trunking rail then lock holder, then keep end caps at both sides.

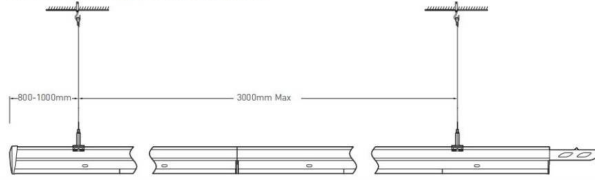


**Wire diagram of triple circuits function**



**Pendant and mounting installation**

Starting Installation distances point should be 800 mm to 1000 mm, then in between 1st & 2nd point should be 3000 mm max

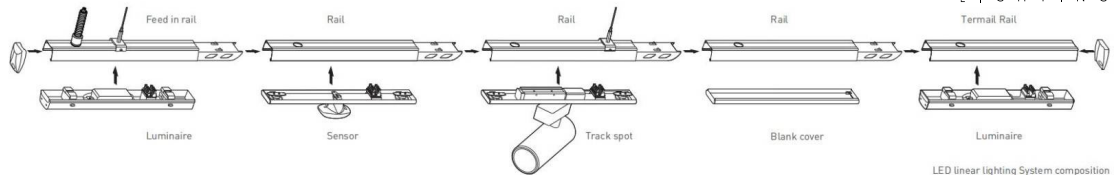


**Four options for installation**



Safety notes:  
Installation should be performed only by  
qualified electrician.

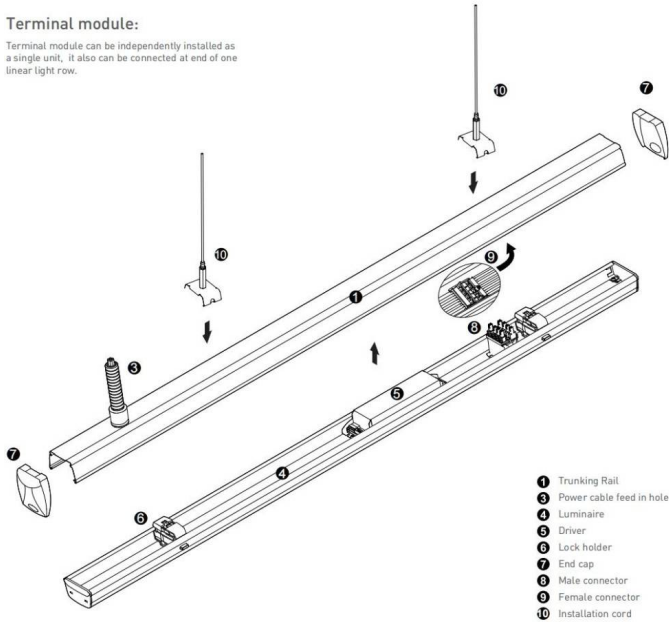
- Make sure no voltage while installation .
- Connect cable wires according to wire labeling.
- Max current should not exceed 16A in one power feed in circuit.



LED linear lighting System composition

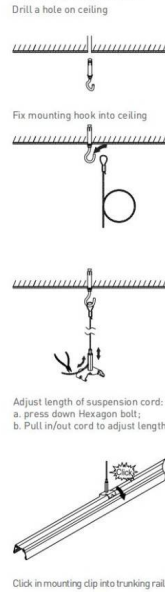
**Terminal module:**

Terminal module can be independently installed as  
a single unit, it also can be connected at end of one  
linear light row.

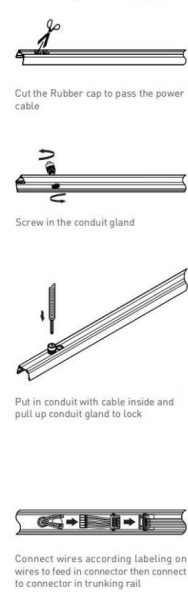


- 1 Trunking Rail
- 2 Power cable feed in hole
- 4 Luminaire
- 5 Driver
- 6 Lock holder
- 7 End cap
- 8 Male connector
- 9 Female connector
- 10 Installation cord

**Step 1**  
Mounting Suspension



**Step 2**  
Connecting Power Supply



**Step 3**  
Mounting Luminaire

