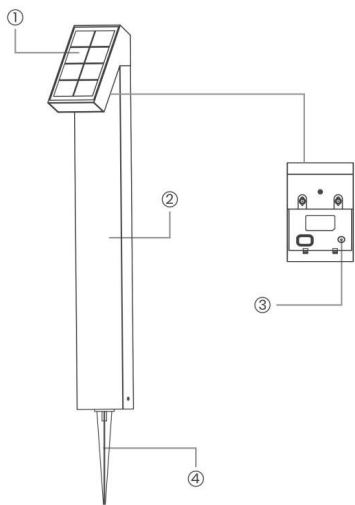




Main Parts



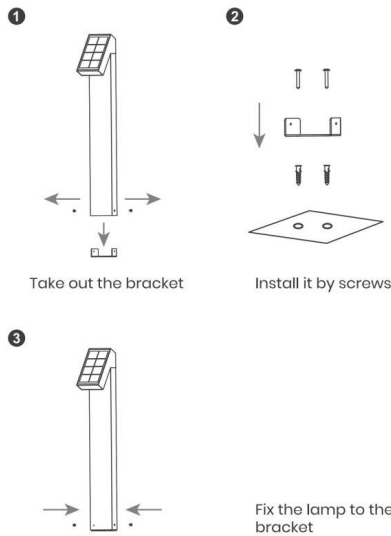
- ① Solar Panel
- ② Lamp Body
- ③ Switch Button
- ④ Stake

Characteristics

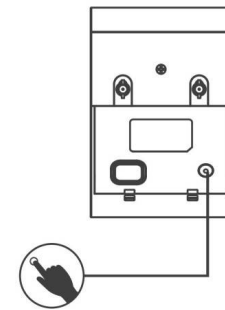
Battery: Li-ion Battery
 Solar panel: Monocrystalline silicon
 Materials: ABS+Aluminium Alloy

How to install the device?

Expansion Screw Install



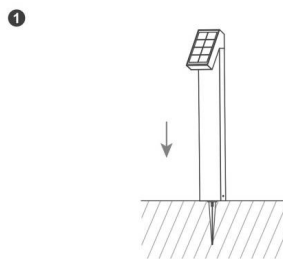
Working process instructions



Switch Button

- 1. Switch on and off: long press for 1.5S
- 2. Short press to change the lighting mode

Ground Staking



Lighting Mode

- M1: 25% till dawn
- M2: 50% till dawn
- M3: 75% till dawn
- M4: 100% till dawn